



Angel Unselfish, Thriving Saver Of Worlds

A Thriving Future for All
by
Gary "Chris" Christopherson

Thrive!

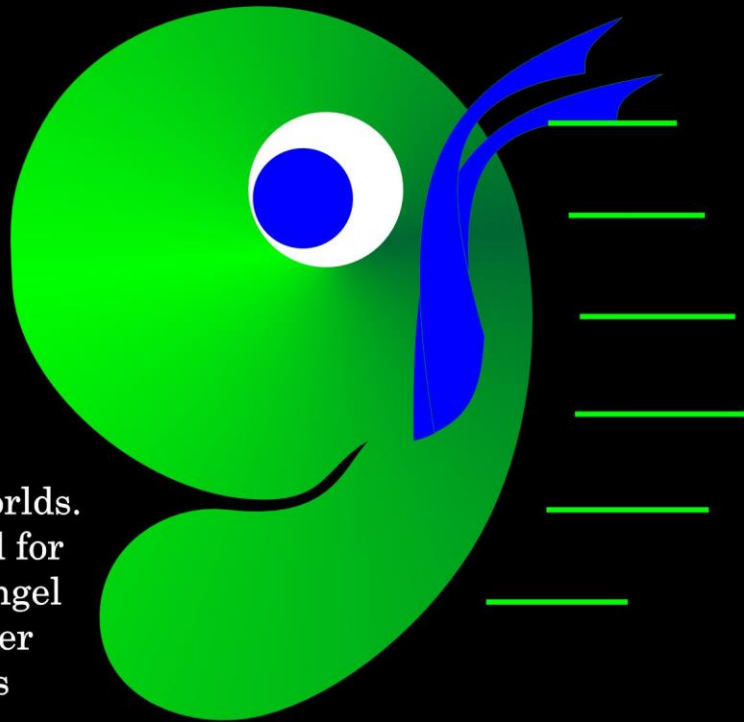
Angel - Unselfish, Thriving Saver Of Worlds

Meet my friend Angel, the most creative, artful and thriving Whimsey ever. Whimses are wild and whimsical, are brightly colored, and live in an amazing land far, far away. Whimsey World.

This is the story of how Angel becomes most powerful Whimsey ever. Can travel through space and time. Can help change future of worlds.

Just as Angel did for Whimsey World, Angel uses this great power to help other worlds become unselfish.

By becoming unselfish, worlds build a thriving future for all. For all “humans” and other creatures. For their home planet.





Be Unselfish and Thrive!

To learn more about being unselfish and
building and achieving a thriving future for all
people, all other creatures, and Earth,
go to Unselfish.world and ThrivingFuture.org

Copyright © 2025

Gary “Chris” Christopherson

GChris.com

Unselfish.world

ThrivingFuture.org

University Park, Maryland

Nelson, Wisconsin

All rights reserved.

ISBN: xxxxx

Dedication

To those who are unselfish and help
achieve a surviving and thriving
future for all - all people, all other
creatures, and Earth.

To those who care enough to help
build, achieve and sustain a
surviving and thriving future for all.

*In this story, “humans” is the word used for
whatever are most intelligent creatures on a planet.
“Creature” is the word used for all living things
(humans (Hu), other animals (An), plants (Pl)).*

*Earth and space images in this book are
created based on NASA images.*

About the Author

Gary “Chris” Christopherson created large, positive change as a Senior Executive at Federal and local levels. As Founder of Thrive! and HealthePeople, he currently works to convince people to be unselfish and build a better, thriving future. Unselfish.world ThriivingFuture.org

He is a sculptor who created over 200 Thrive! sculptures under the signature “GChris Sculpture”. GChris.com

He has written several books. More info at GChris.com and ThriivingFuture.org

Several fiction books on being unselfish and thriving, including: black box - First Book in the Thrive! Series. “The Thrive! Endeavor – Second Book In Thrive! Series”. Angel - Thriving Creator of Artful Things. Angel - Most Creative, Artful and Thriving Ukrainian. Early Extinction – Angel Comes to Save Earth. Being Unselfish! – Unselfish Path to Surviving and Thriving. T!rrific [terrific] - What will you do to thrive?. Thrive! – Escape from Extinction. Extinction! – The Failure to Thrive. Xtinct – Universal Justice for Earth. A Thrivist Tale: Path To Thriving Future For All. Thrive Or Not To Thrive? – That Is The Question. A Tale Of Two Tomorrows. Angel - Unselfish, Thriving Saver of Worlds



Several non-fiction books focus on how to be unselfish and build a better, thriving future, including: Thrive! Endeavor - All Thrive Forever. *Thrive!* - Building a Thriving Future for All. Thrivism – Path to Thriving Future for All. *Thrive!* – Quick Guide to a Thriving Future. *Thrive!* – People's Guide to a Thriving Future. Thrive! System!® - Achieving Thriving Future For All. Early Extinction or Thriving Future. Be Unselfish! - How to Survive and Thrive While Being Unselfish. Stop Selfish - Stop Selfish, Shortsighted, and Stupid. Hope! - Hope for a thriving future for all. On Razor's Edge - If Humans Have The Will, Human Behavior Can Change To Avoid Early Extinction And Build Thriving Future. Behavior Effectiveness Model (BEM). The Thrive! Philosophy: Thrive! - All Thrive Forever. HealthePeople® - Achieving Healthy People, Communities, Countries and World via Thrive!. First People Thriving Health Systems – Achieving healthy and thriving First People. Thrive! Sculpture & Thought – Sculptural Vision of a Thriving Future for All. A Life in Pursuit of Thriving for All. The Story of Thrive! Center and Thrive! Park.



Thrive! Sculpture by GChris

Be Unselfish

2' x 3' Metal Mobile Sculpture

Join with the Thrive!® and together help encourage people to be unselfish and create and sustain thriving future for all.

GChris.com

Unselfish.world

ThrivingFuture.org

Note To Reader

This book is meant for caring, forward thinking younger people. Not as much for older adults. Older adults are more the problem than the solution.

This is especially for younger people who are or want to be unselfish. Especially for younger people who want a thriving future for all. For all people. For all other creatures. For Earth.

This is about how worlds can have either a very bad or a very good future. It is the most intelligent and most capable beings on a world who most determine a world's future. On Earth those beings are known as humans.

If those most intelligent and most capable beings want a surviving and thriving future for all, there is only one path. That path is for all to be unselfish.

If their choice is to be unselfish, then their world will have a thriving future for all.

Their choice. Unselfish or selfish. Their and their world's future? Thriving or not thriving.

Prologue

Since the beginning of the universe, there have been many worlds. Many thrive throughout their existence. Many fail to thrive. Some go extinct.

This is the story of Angel, a Whimsey from Whimsey World. Angel helped lead the Whimseys from being selfish with an endangered future to being unselfish with a thriving future.

In this story, Angel discovers more and more powers, allowing Angel to travel to and interact with other worlds.

Having led the successful effort to save Whimsey World, Angel decides to travel throughout the universe to different worlds. Some facing early extinction and great damage to their home planet. Some with an uncertain future. Some with thriving future.

Angel tries to help save other worlds. Angel also comes to Earth. To help Earth to avoid early extinction and great damage to Earth. To help humans become unselfish and have a thriving future for all.

What is the future for each of these worlds?

Thrive? Or not thrive?



The universe is really, really big.

Spanning across the universe are an enormous number of planets. Some are habitable. Some are not.

On a small number of planets are living beings. These living beings vary greatly.

Many of them have developed into highly intelligent and highly capable beings. For this story, we will call them “humans”.

Their impact on their planets is much greater than other living creatures. Their impact can be mostly positive or mostly negative. All this depends on whether they are mostly selfish or mostly unselfish.

For this story we will call this small number of planets “worlds”.

Worlds are what this story is about.

Saving worlds is what this story is about. About worlds being unselfish and thriving.



This story is about Angel.

Angel is a Whimsey living far, far away in another world, Whimsey World.

Angel is very excited!

Angel and the Whimseys celebrate their avoiding early extinction and building and achieving a thriving future.

A very happy future for this world!

But Angel wonders, "What about other worlds?"

Whimsey World

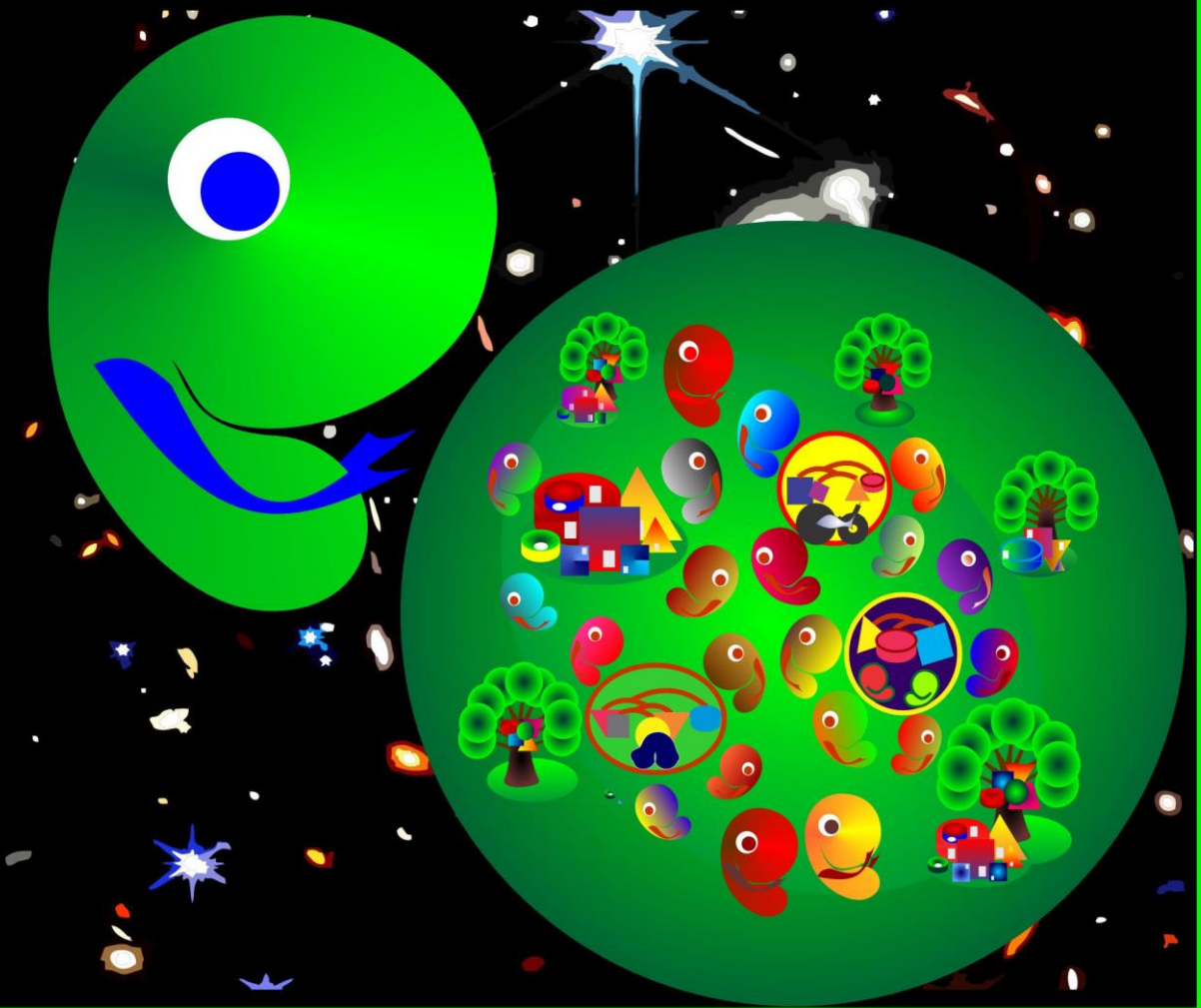
This is Whimsey World. Home to some of the most creative and caring creatures in the universe.

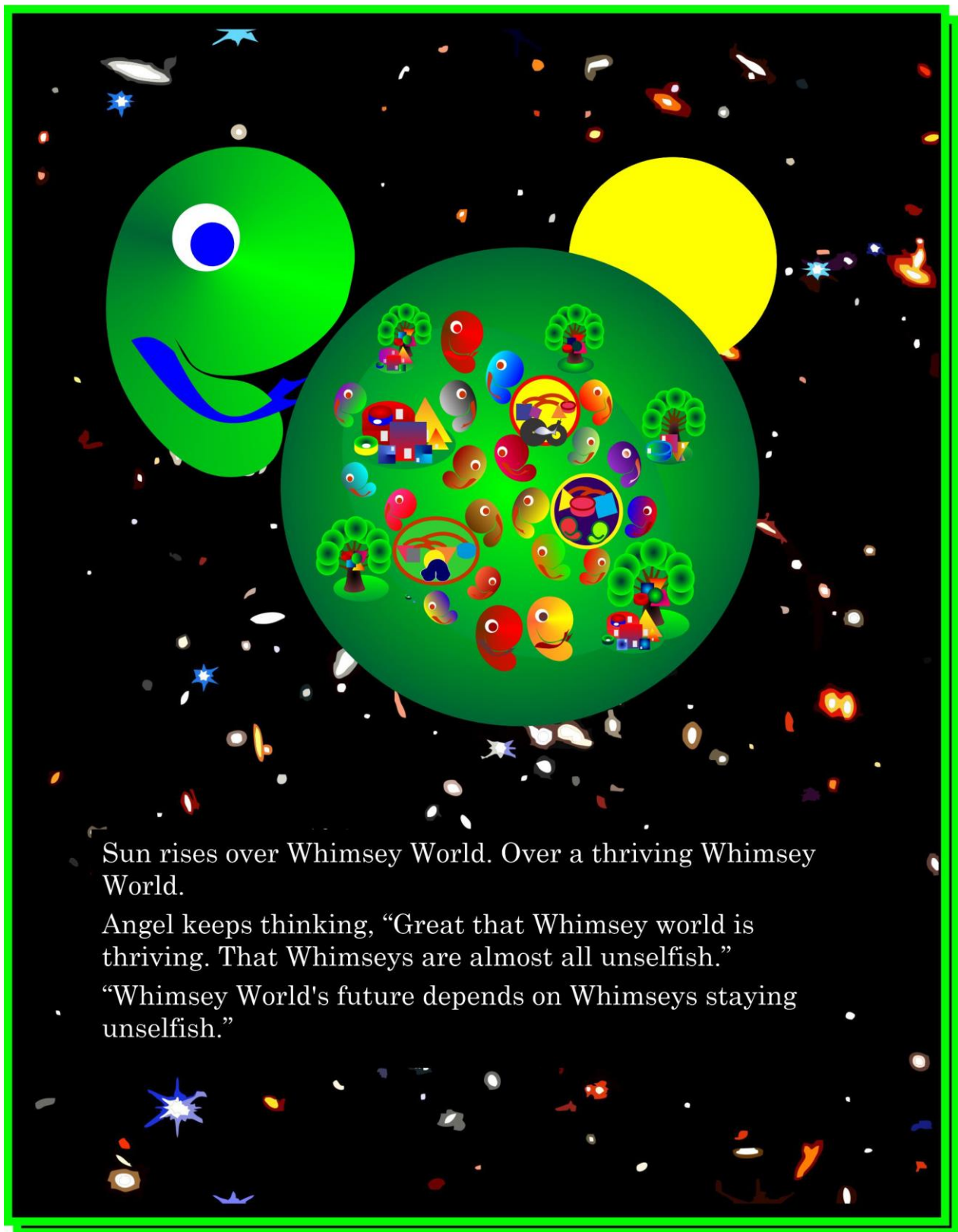
Whimseys are wild and whimsical. Very caring. Highly creative. Brightly colored. From an amazing land far, far, away.

Angel, a bright green Whimsey, is the most caring, creative, artful, and thriving Whimsey ever.

Angel is powerful by being whimsical and creative. Even more powerful by joining with and leading all Whimseys.

But Angel is becoming more and more powerful. Being able to move through space. Being able to move through time. And more.....

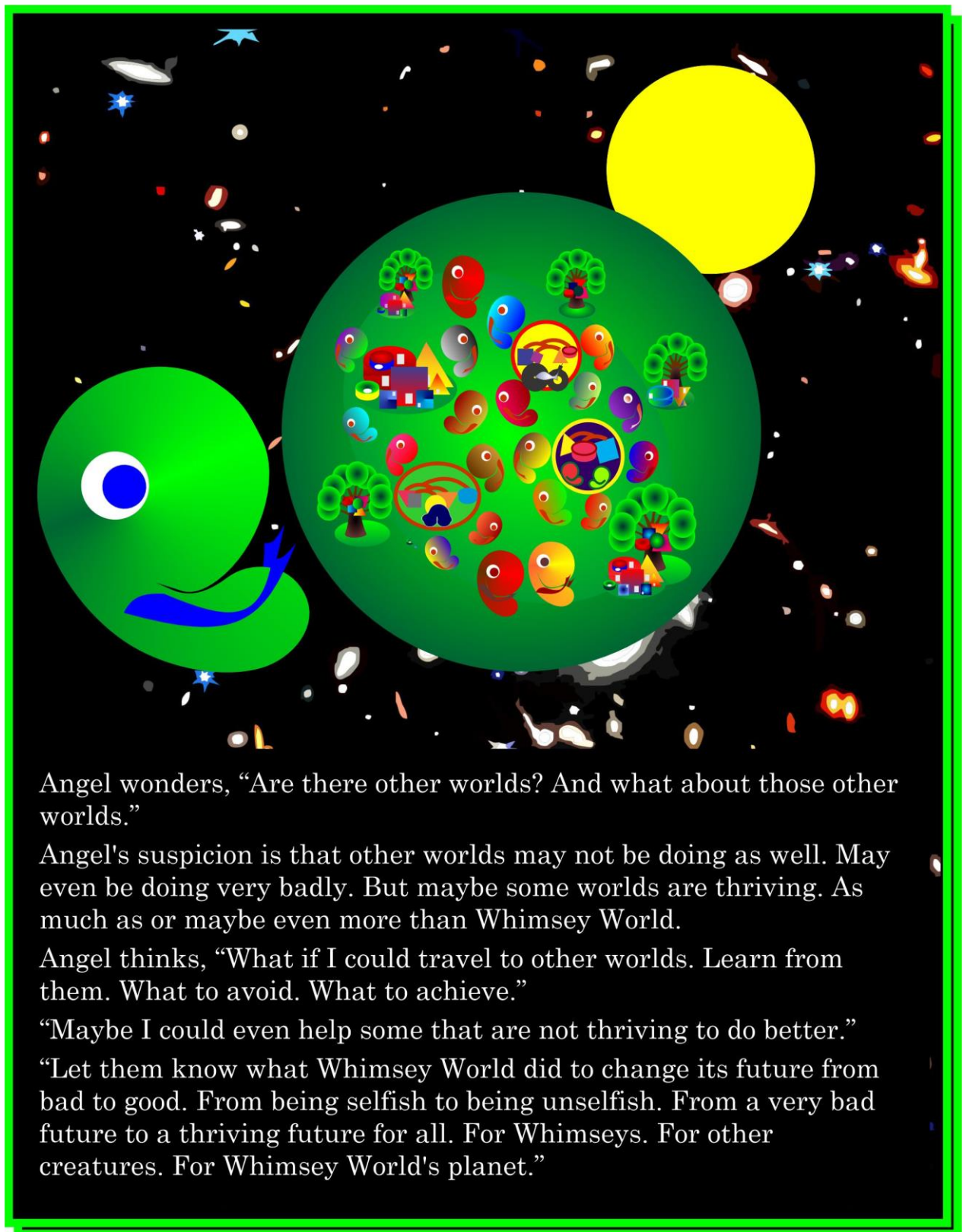




Sun rises over Whimsey World. Over a thriving Whimsey World.

Angel keeps thinking, "Great that Whimsey world is thriving. That Whimseys are almost all unselfish."

"Whimsey World's future depends on Whimseys staying unselfish."



Angel wonders, "Are there other worlds? And what about those other worlds."

Angel's suspicion is that other worlds may not be doing as well. May even be doing very badly. But maybe some worlds are thriving. As much as or maybe even more than Whimsey World.

Angel thinks, "What if I could travel to other worlds. Learn from them. What to avoid. What to achieve."

"Maybe I could even help some that are not thriving to do better."

"Let them know what Whimsey World did to change its future from bad to good. From being selfish to being unselfish. From a very bad future to a thriving future for all. For Whimseys. For other creatures. For Whimsey World's planet."



Angel worries, "But I've never traveled beyond Whimsey World. Can I even do that?"

"The universe is so vast. If there are other worlds, where are they? How far away are they?"

"The air above and beyond Whimsey World is so thin. No breathable air. So very cold. So very dark."

"Am I really able to do this?"

"Am I brave enough to do this?"

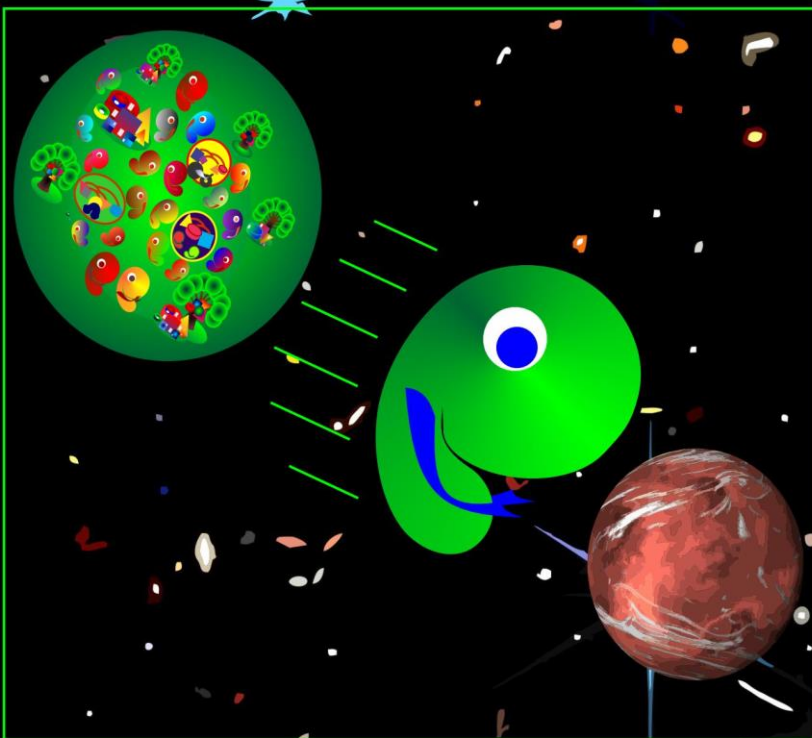


But this is a very different Angel.

Since helping save Whimsey World and help it build a thriving future, Angel has been changing.

This Angel has many more powers than just a short time ago.

These greater powers are what will help Angel travel to other worlds. Will help Angel help other worlds.



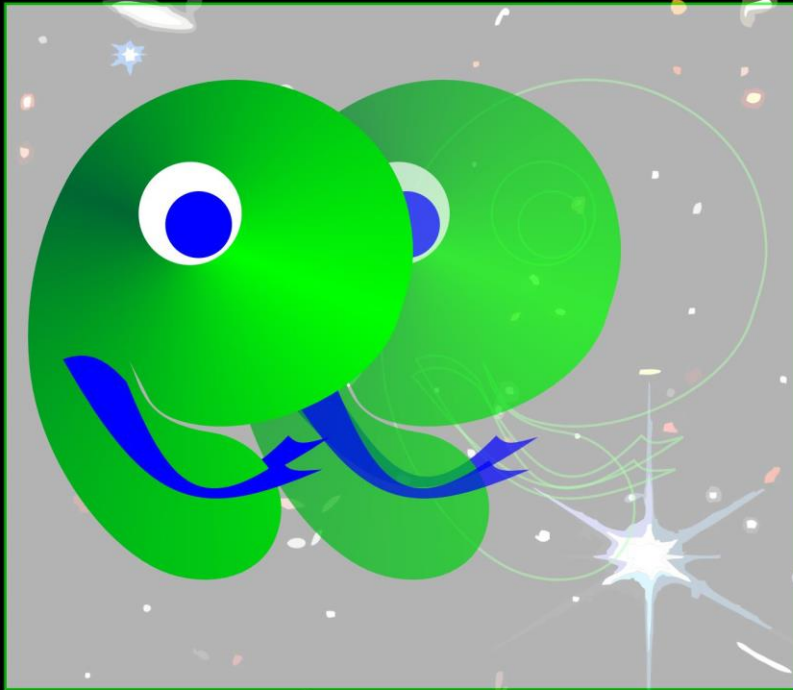
Angel is changing. Getting more powerful. Angel develops new powers.

Angel can do more than just make things with the mind. Can make bigger, more complex things.

Angel can change existing things. May be able to change other living things, but chooses not to. Not the right thing to do. Only change non-living things.



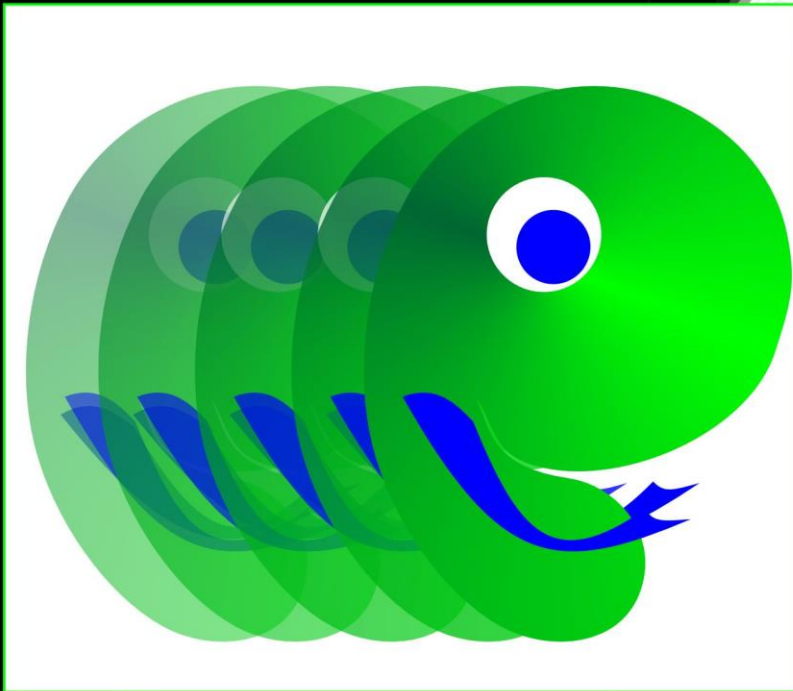
Angel can change self. Change colors. Become invisible (no color). Change body shape. Change speech. Change hearing and eyesight.



Angel doesn't breathe. Angel is not affected by cold or heat.

Angel can do more than just fly. Can move through space. Great distances. Beyond Whimsey World to other worlds.

May be able to move at speed of light. Then even faster. Almost instantaneous.



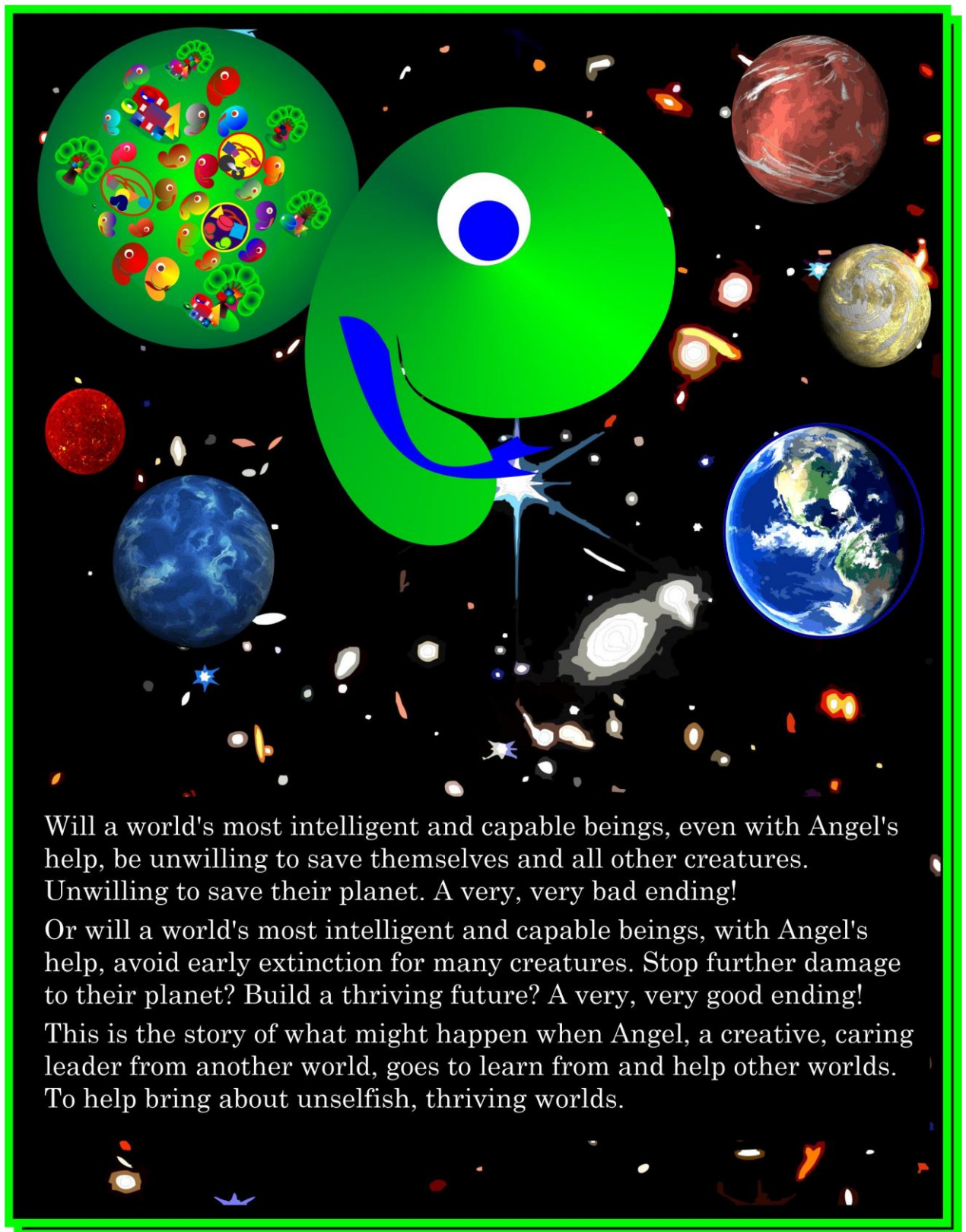
Angel may be able move through time into the past. May be able to move through time into the future.

Angel may or may not be able to move across dimensions. Angel not sure.



Through long-range listening and viewing devices, Whimsey World starts to learn more about other distant worlds.

Angel hears about a world that is on a very, very bad path to early extinction. Angel wants to help. But Angel also hears of another world that is on a path to a very good future, a thriving future. And then there is another world that faces a still uncertain but likely bad future. That world is known as Earth.



Will a world's most intelligent and capable beings, even with Angel's help, be unwilling to save themselves and all other creatures. Unwilling to save their planet. A very, very bad ending!

Or will a world's most intelligent and capable beings, with Angel's help, avoid early extinction for many creatures. Stop further damage to their planet? Build a thriving future? A very, very good ending!

This is the story of what might happen when Angel, a creative, caring leader from another world, goes to learn from and help other worlds. To help bring about unselfish, thriving worlds.



Angel gets excited, "There are other worlds out there!"

"I must try to learn from them. If they need it, help them.!"

Angel looks up into space beyond Whimsey World.

With a whoosh, Angel starts to climb.

First to thinner air above Whimsey World. As the climb continues, Angel can feel that the air is getting thinner. Less oxygen.

"So far. So good. Must keep going."

Angel continues the climb. Now beyond the atmosphere surrounding Whimsey World.

Then Angel remembers that breathable air is not something Angel needs. Lack of oxygen will not stop Angel from doing the mission.

"Whee! Not only can I fly. I can fly in space beyond Whimsey World."



“Other worlds? I have to try. We have learned so much in moving from a selfish world to an unselfish world.”

“Moving from an endangered world to a thriving world. Thriving for all. For Whimseys. For other creatures. For our planet Whimsey.”

“If there are other worlds out there with living beings, they face many of the same challenges we did. We still do.”

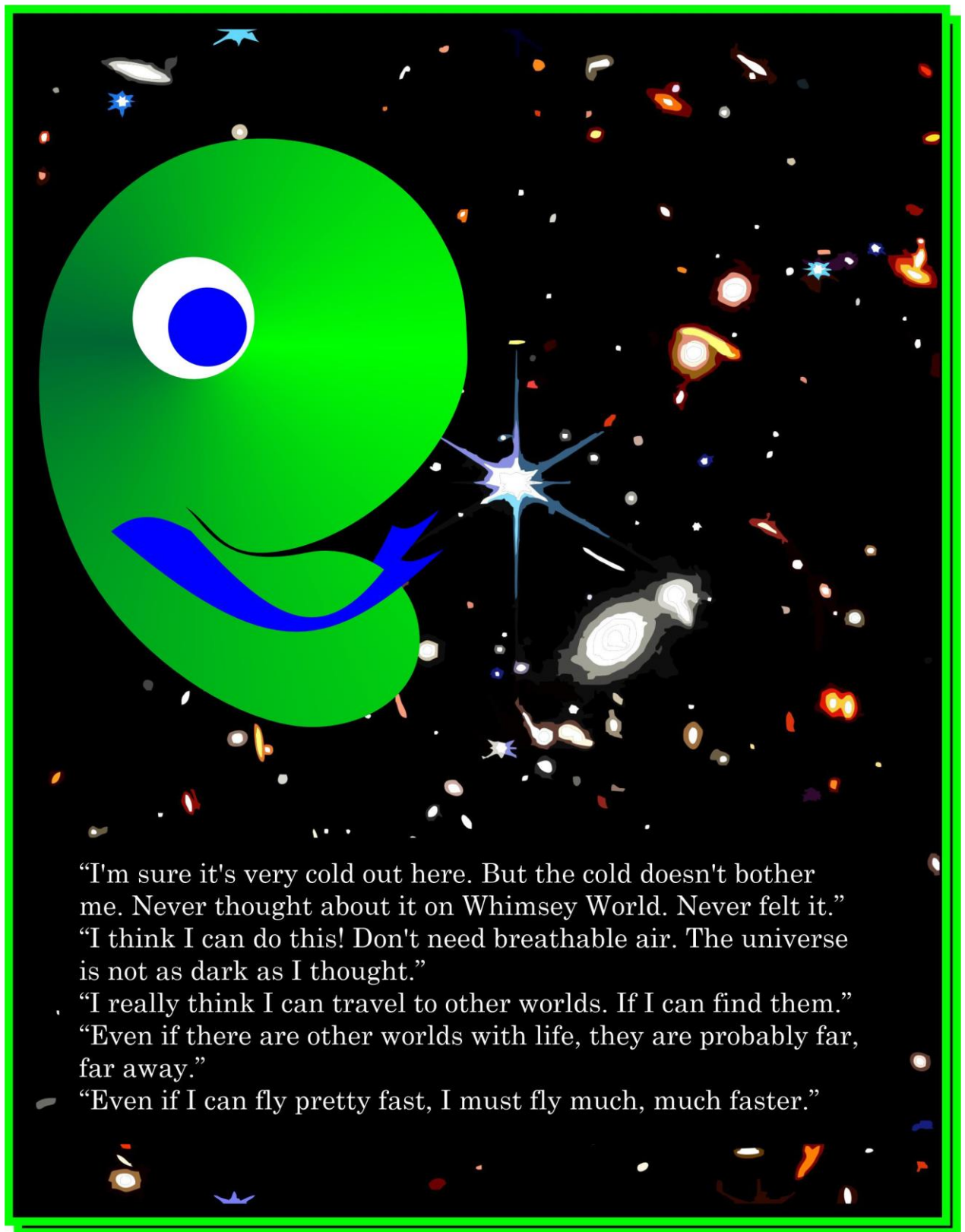
“Maybe I can help.”



“Sure is dark out here. Except for the stars. They are brighter than I have ever seen.”

“In fact, there is so much to see in space. There are so many stars. There are many, many planets?”

“Of all those planets, which ones are living worlds? And, where are the living worlds? How do I find them?”



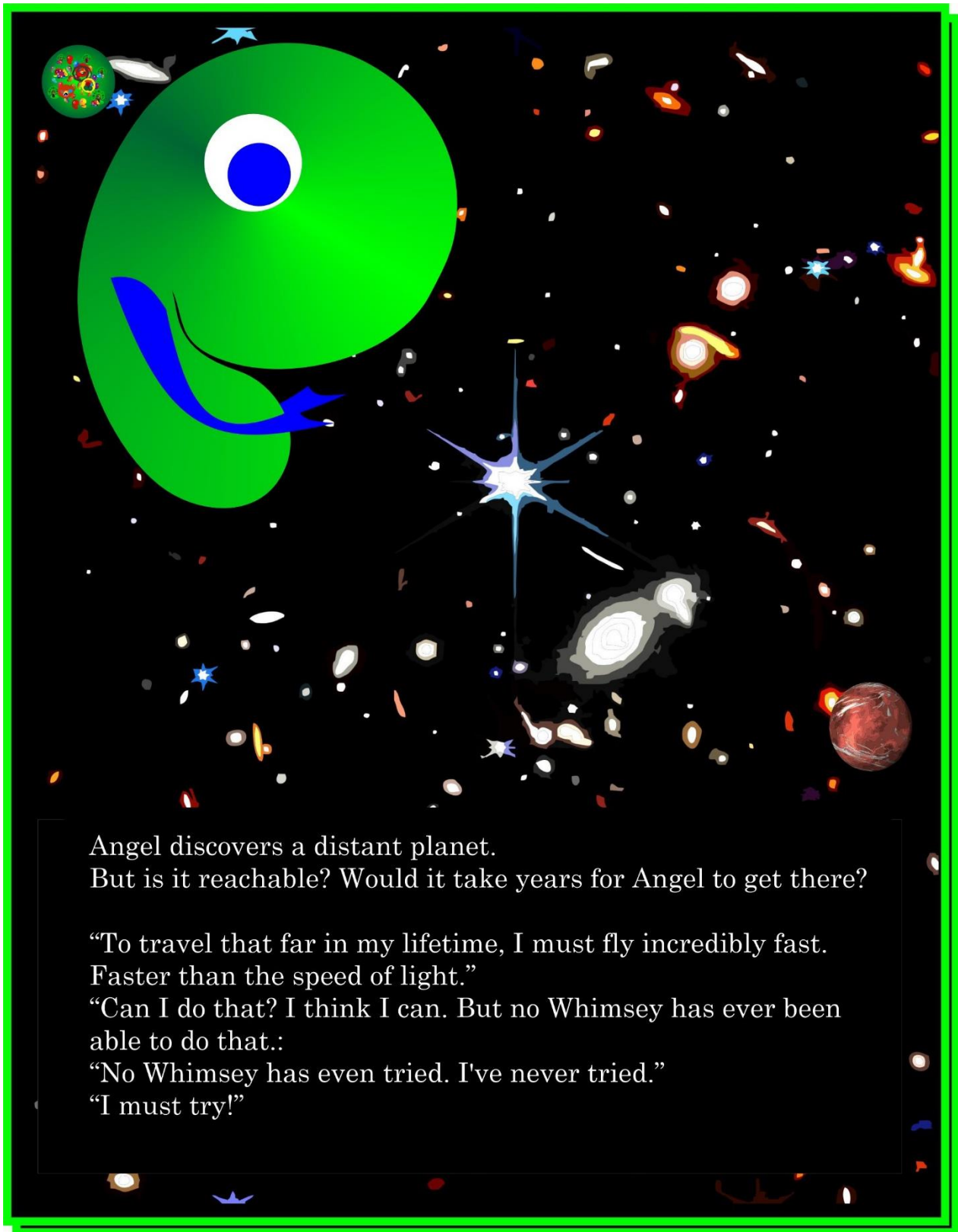
"I'm sure it's very cold out here. But the cold doesn't bother me. Never thought about it on Whimsey World. Never felt it."

"I think I can do this! Don't need breathable air. The universe is not as dark as I thought."

"I really think I can travel to other worlds. If I can find them."

"Even if there are other worlds with life, they are probably far, far away."

"Even if I can fly pretty fast, I must fly much, much faster."



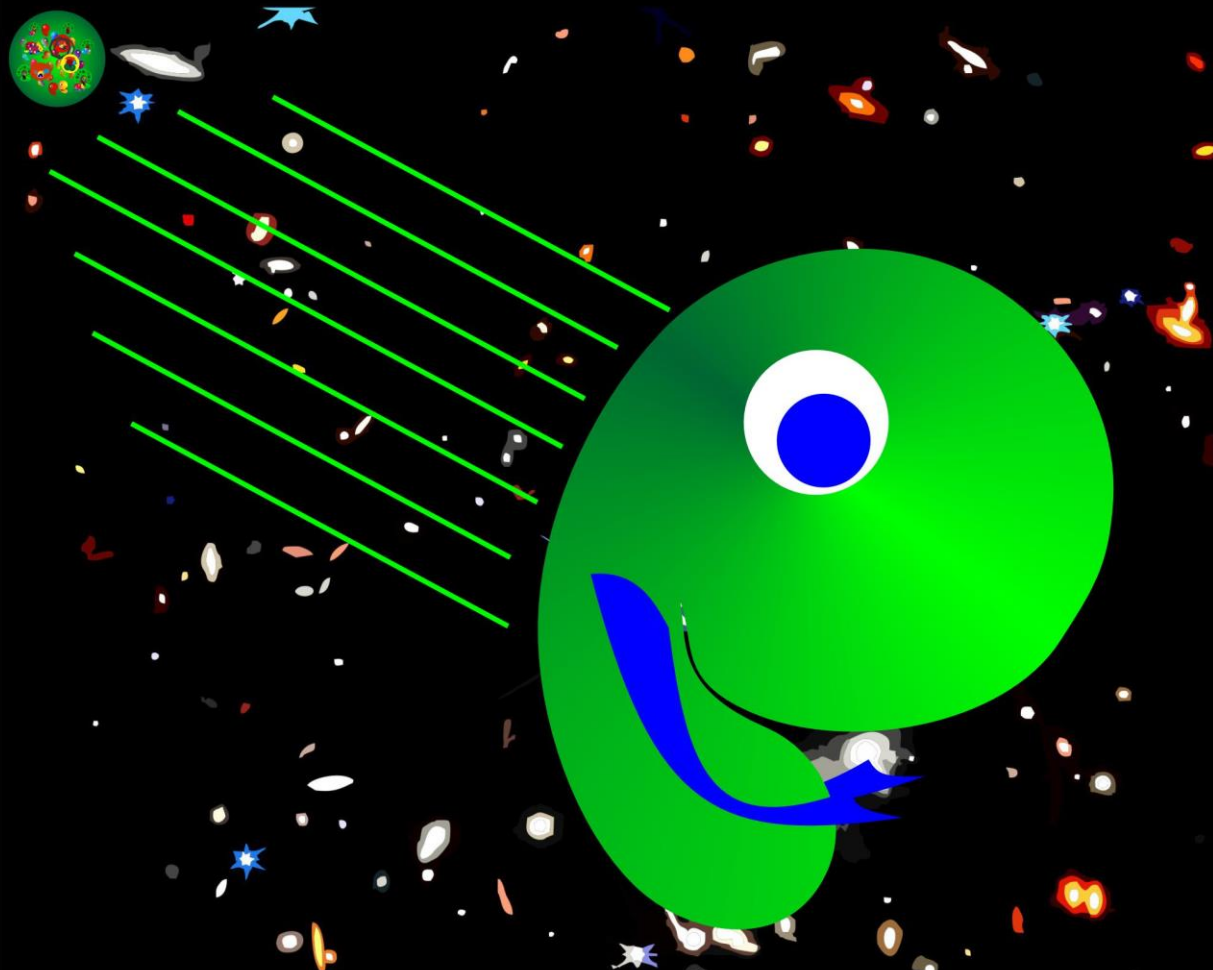
Angel discovers a distant planet.
But is it reachable? Would it take years for Angel to get there?

“To travel that far in my lifetime, I must fly incredibly fast.
Faster than the speed of light.”

“Can I do that? I think I can. But no Whimsey has ever been
able to do that.:

“No Whimsey has even tried. I’ve never tried.”

“I must try!”



Angel starts to fly faster. Faster than Angel thought possible. In almost no time, Angel reaches the part of space where the planet should be. Unfortunately, Angel made a mistake and flew past the planet.

“Missed it. Must be more careful or I will miss more worlds. I will find this world later.”

“But still a success! I can fly really, really fast. But that was still short of speed-of-light travel.”

“I must go much faster!”

“Faster than speed-of-light if I am to reach even more distant worlds. Worlds with life on them.”



“Success! I can fly really, really fast. “

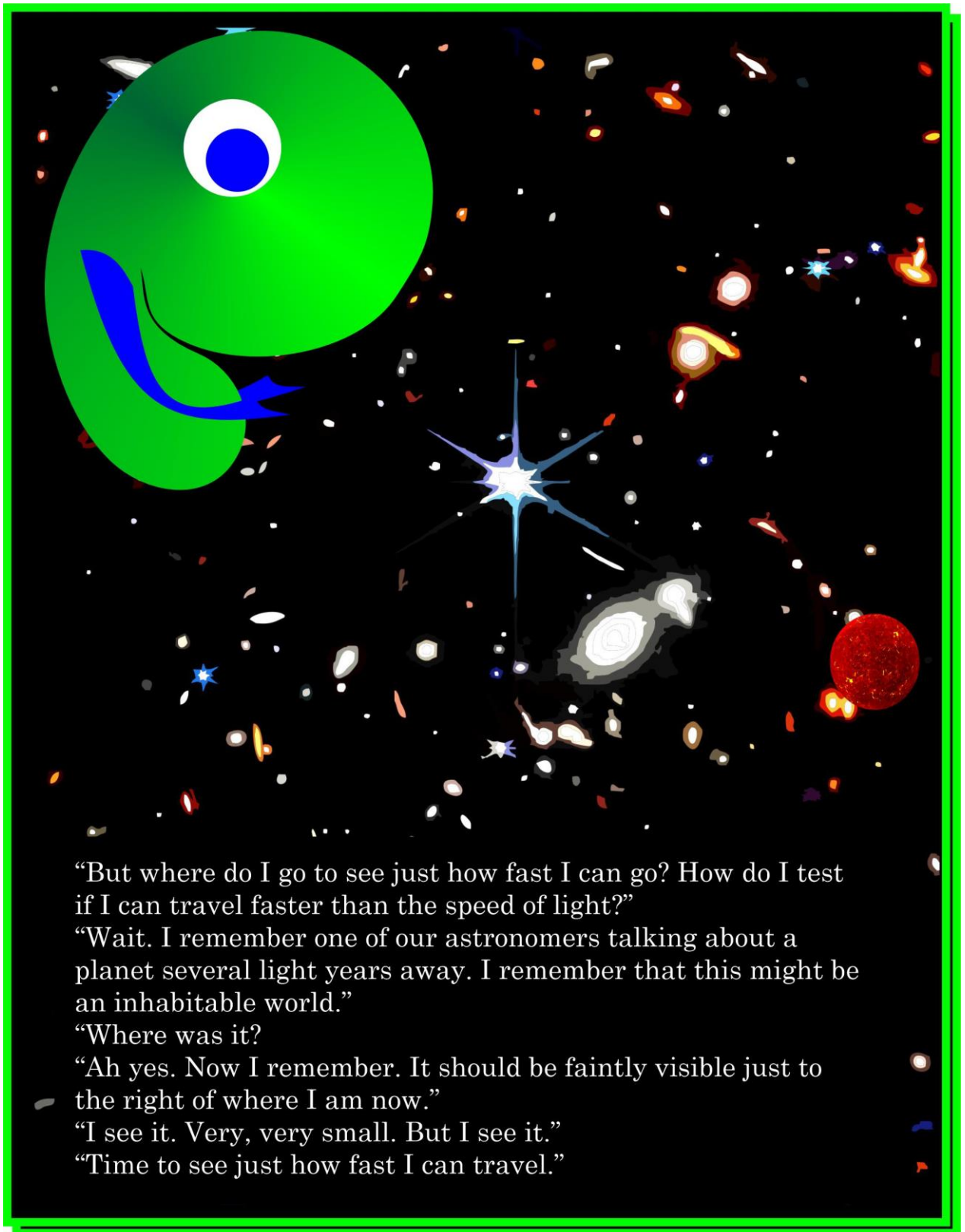
“But that was still short of speed-of-light travel.”

“I must go much faster!”

Angel concentrates like never before. “I know I can do it. I can do it.”

Then it happens. Angel traveling at speed-of-light.

“I did it. Speed-of-light travel.”



“But where do I go to see just how fast I can go? How do I test if I can travel faster than the speed of light?”

“Wait. I remember one of our astronomers talking about a planet several light years away. I remember that this might be an inhabitable world.”

“Where was it?”

“Ah yes. Now I remember. It should be faintly visible just to the right of where I am now.”

“I see it. Very, very small. But I see it.”

“Time to see just how fast I can travel.”

“Time to fly!”

With that, Angel starts to fly faster. Then even faster. Approaches speed of light.

Then faster then the speed of light.

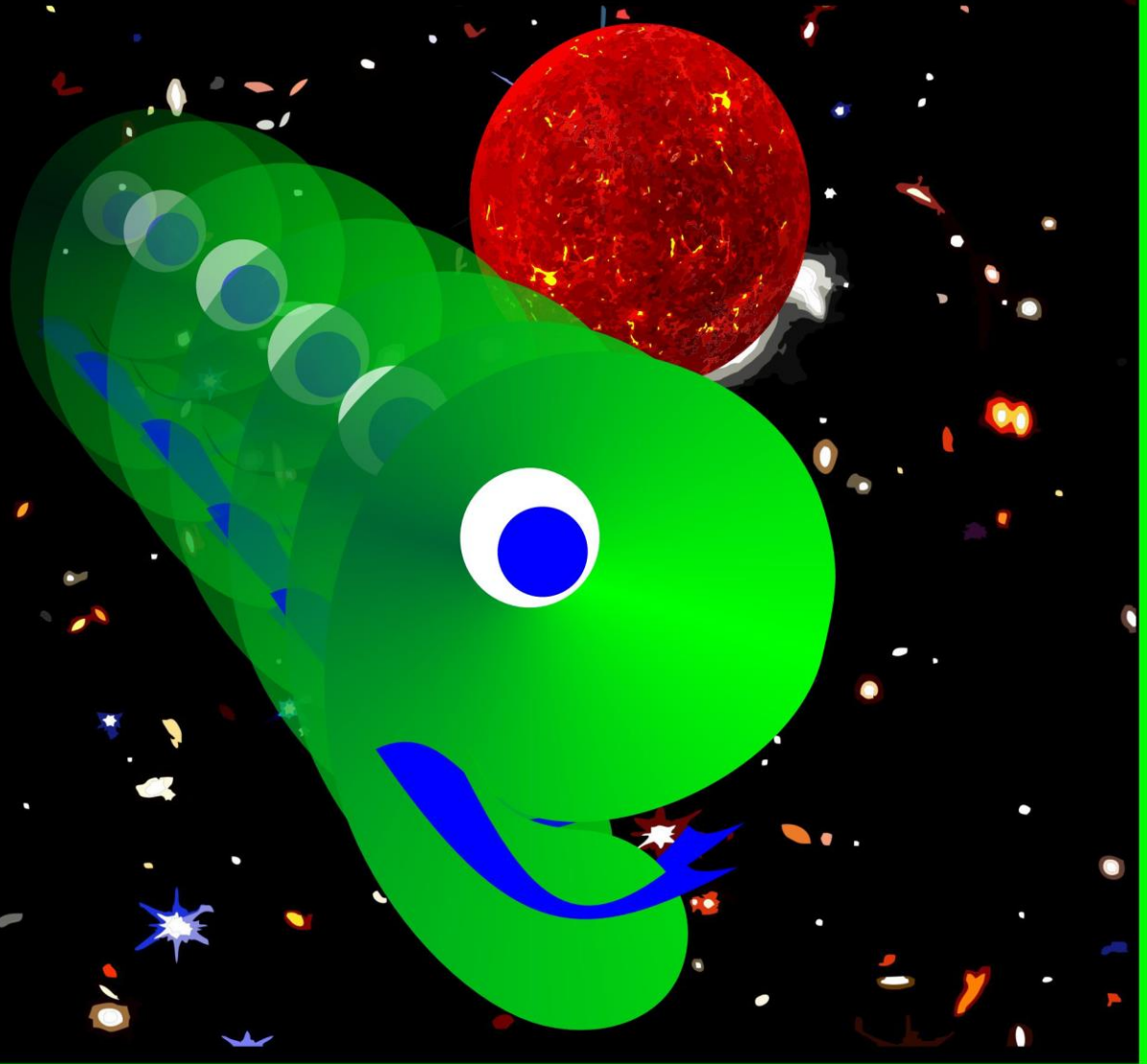
Angel sees a very different view of the universe as it passes by. No longer distinct objects. More of a flow of streaks of color.

“Going so fast it is hard to know when to slow down. When to stop.”

“Think this is about right. Time to slow down. Time to stop.”

As Angel stops, Angel realizes that the planet is a bit behind.

“A bit of an overshoot. But not by too much. A quick trip back.”



Dead World

Having to go back a bit to the planet, Angel hovers above it.

“Is this a living world? If it is, what kind of life is on it?”

As Angel flies around the planet, Angel sees all the bright colors.

But sadness. Angel realizes that there is no substantial life on it.

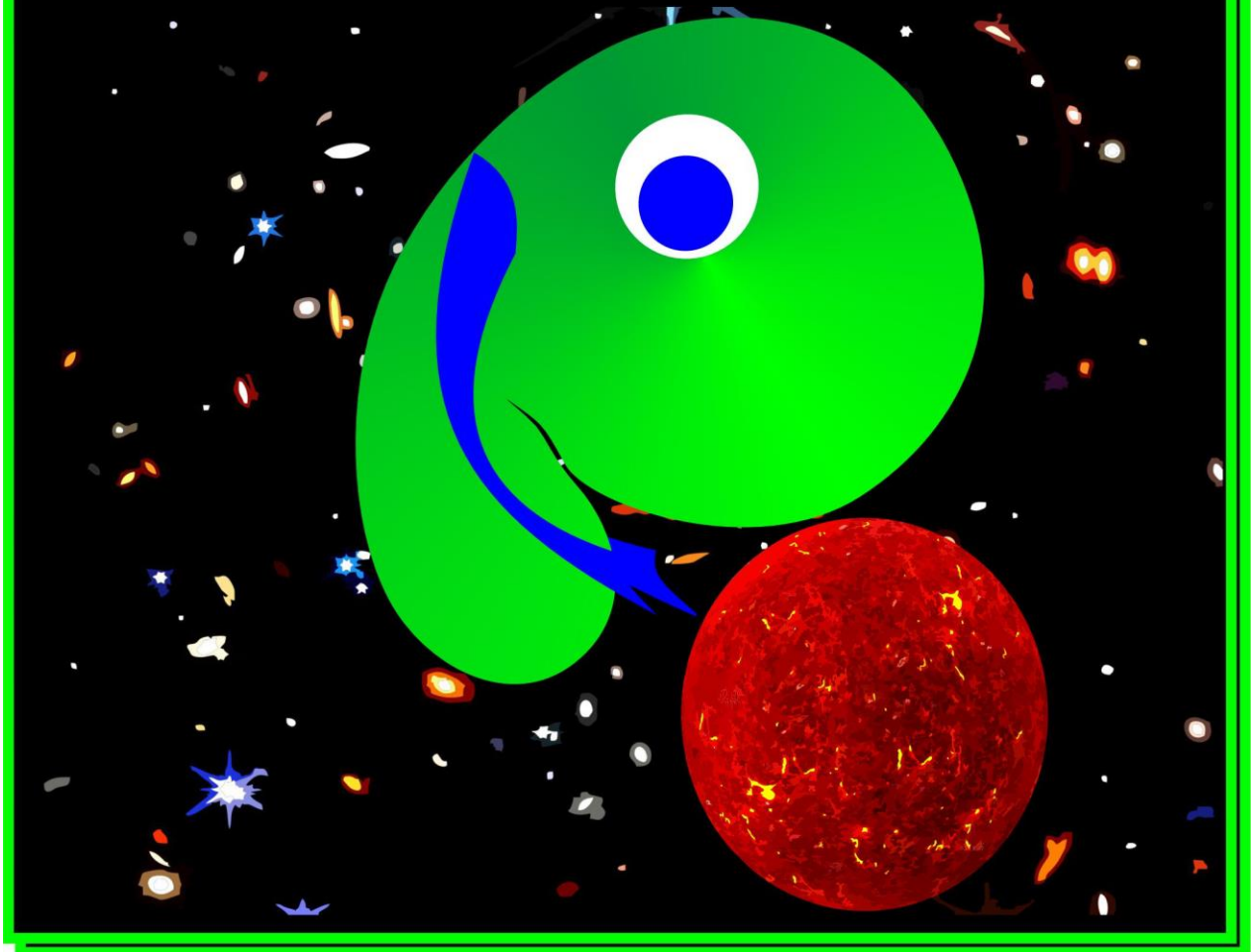
It was alive in the past. Now a dead world. It is not a world like what Angel seeks.

“Pretty planet, but not a living world like what I seek.”

“Good news. I can travel faster than the speed of light. I can travel to distant planets. Maybe find distant living worlds.”

“Do I go home? Do I go on?”

“Oh definitely go on. And on until I find a living world. Maybe that world can use my help to become a thriving world.”



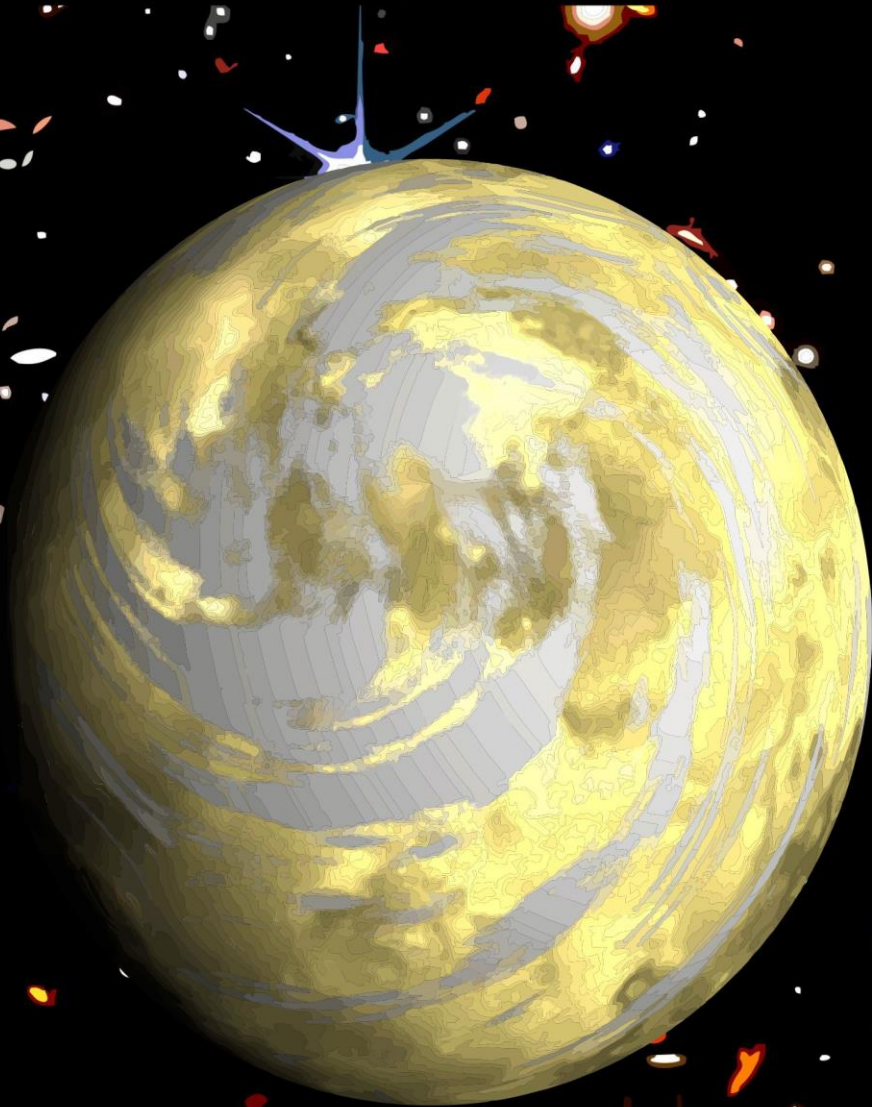
Living But Damaged World

Angel continues to travel through space.

Traveling at the speed of light. At times, even faster than speed of light.

Frequently, Angel slows down to be able to see an individual planet. Slows down to see if it is a living world.

Then, Angel spots a planet that might be living. Signs of water or something like water. A sign of potential life.



Angel hovers over different parts of the planet looking for signs of life.

Then the first sign. Live plants.

A little closer. The second sign. Live animals.

And then the sign of highly intelligent life. Structures made by highly intelligent life. Buildings. Roads.

Even closer. There they are. The creatures that made those structures.

“These creatures are very different than Whimseys. If they are the most intelligent creatures of this world then they would be considered ‘humans’.”

“I must get closer. But I must be careful. I don't know how they will react to seeing their first Whimsey.”



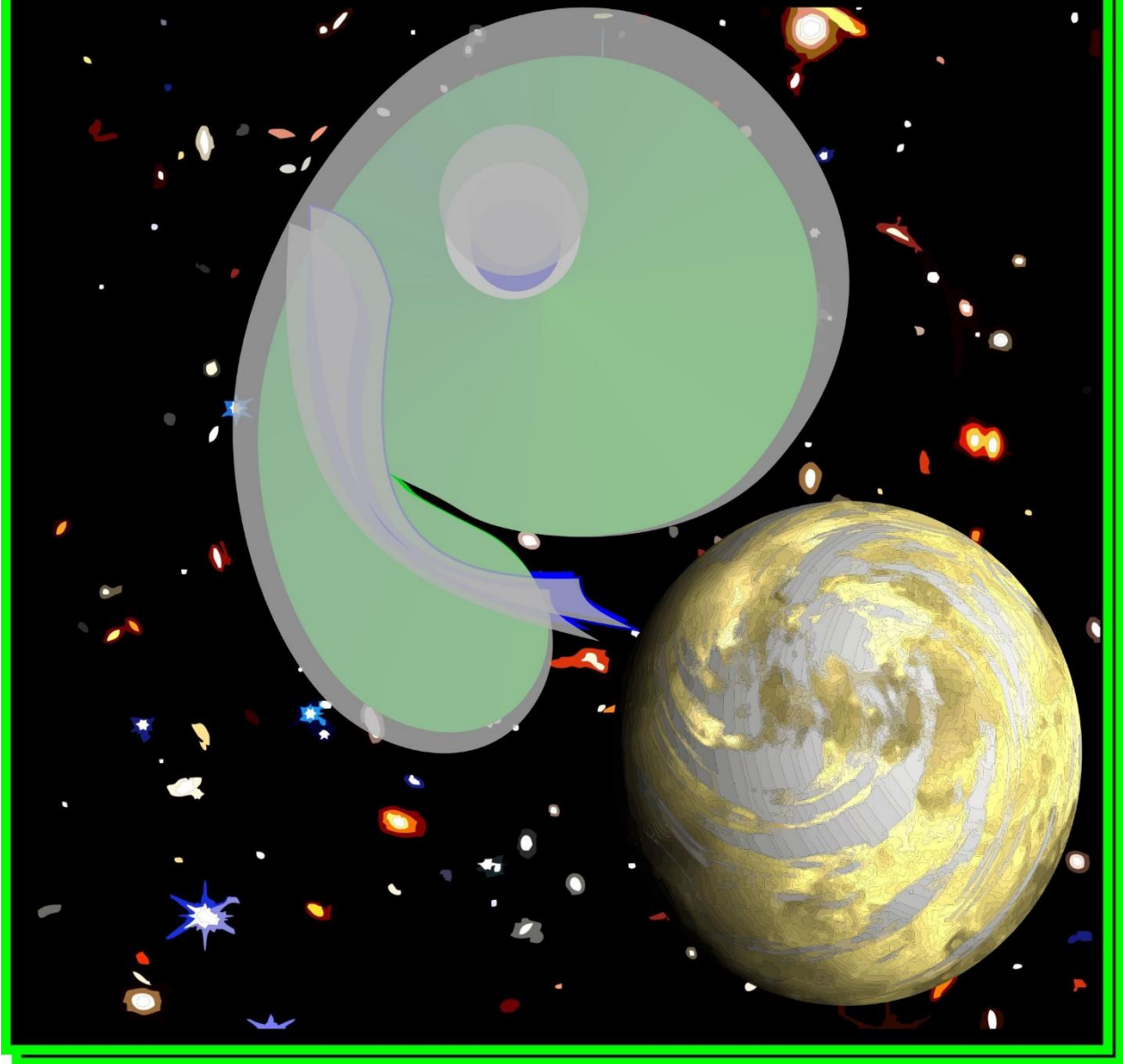
Angel changes. Almost invisible.

Observes the many creatures living on this living world.

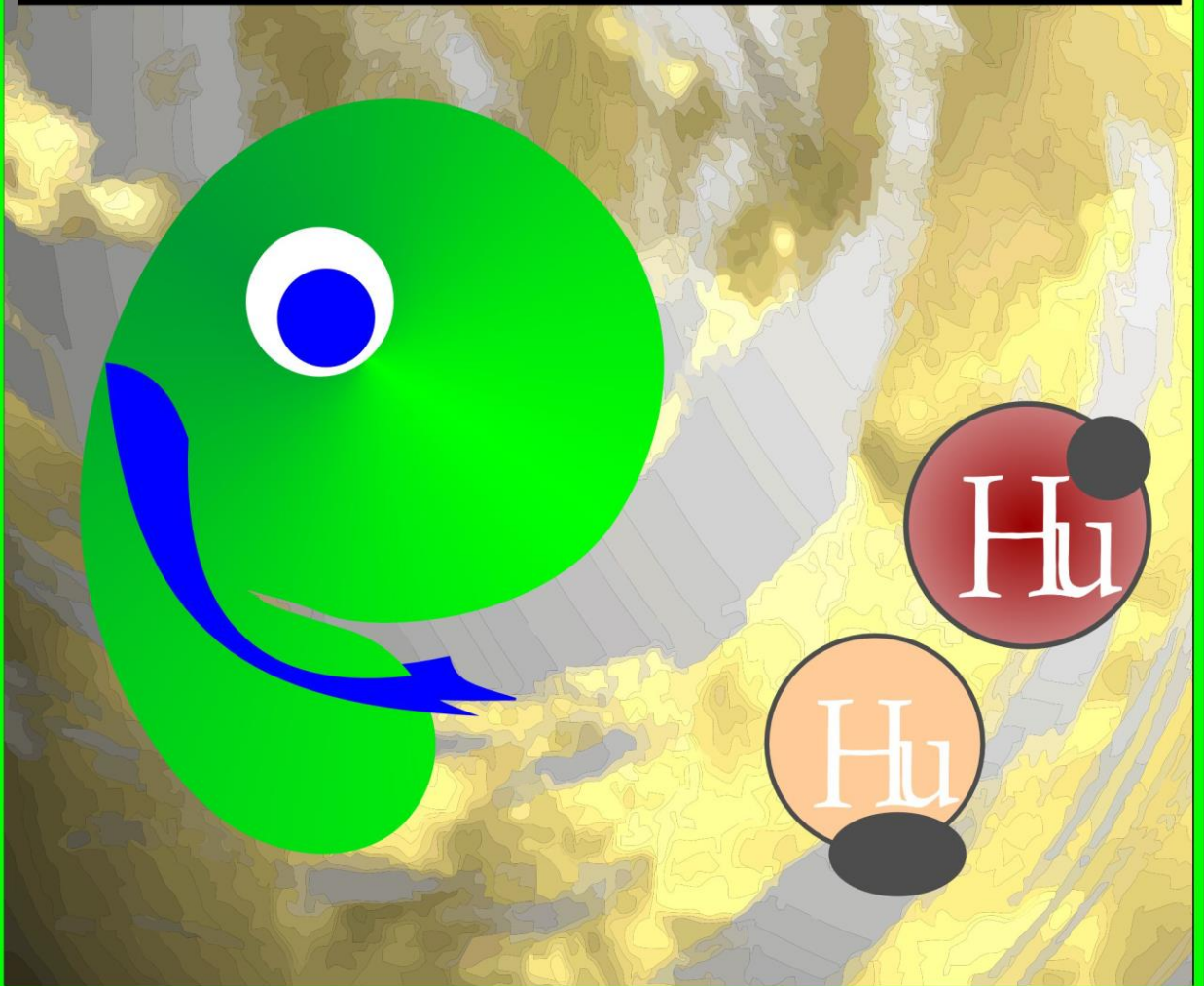
“Hmm. They sort of behave like Whimseys, except they don't fly.”

“They seem to mostly use machines to move around. Some machines move several creatures at a time. Some machines move only a single creature.”

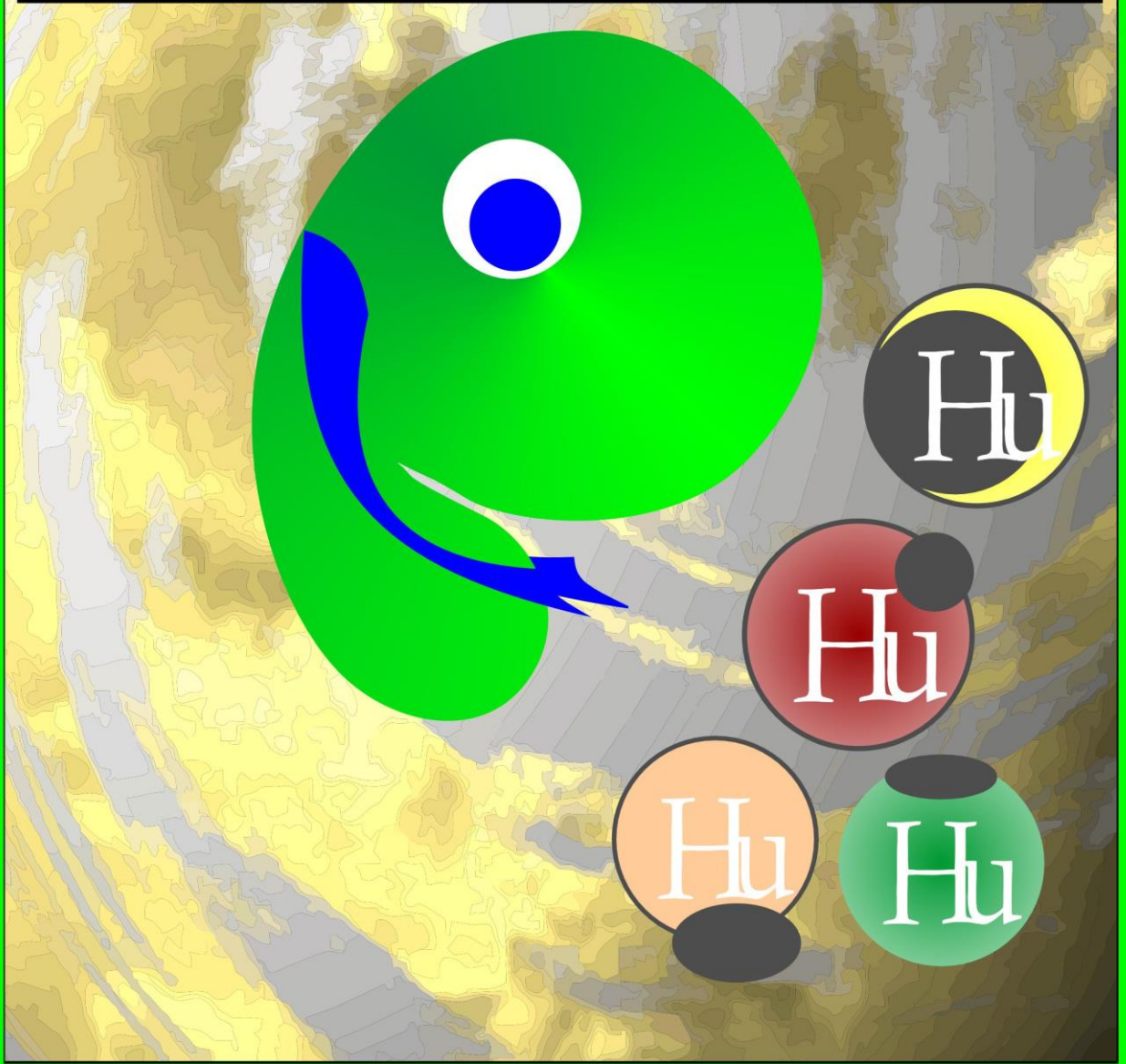
“Machines appear to be a permanent part of many of the creatures.”



As Angel changes to be visible, a creature spots Angel. The creature shouts over to Angel, "Hey, what are you doing here? More importantly, what are you? You are not one of us." Angel replies, "Hi. My name is Angel. I am what is known as a Whimsey. I come from Whimsey World." "And yes, I am very different than all of you. For one thing, I can fly. Another is that I am not attached to a machine." "Though your language is very different than mine, somehow we are able to communicate. That is a good thing." "I understand that you are humans. Clearly, you are highly intelligent creatures. I think 'human' is the word I hear may be used on other worlds."



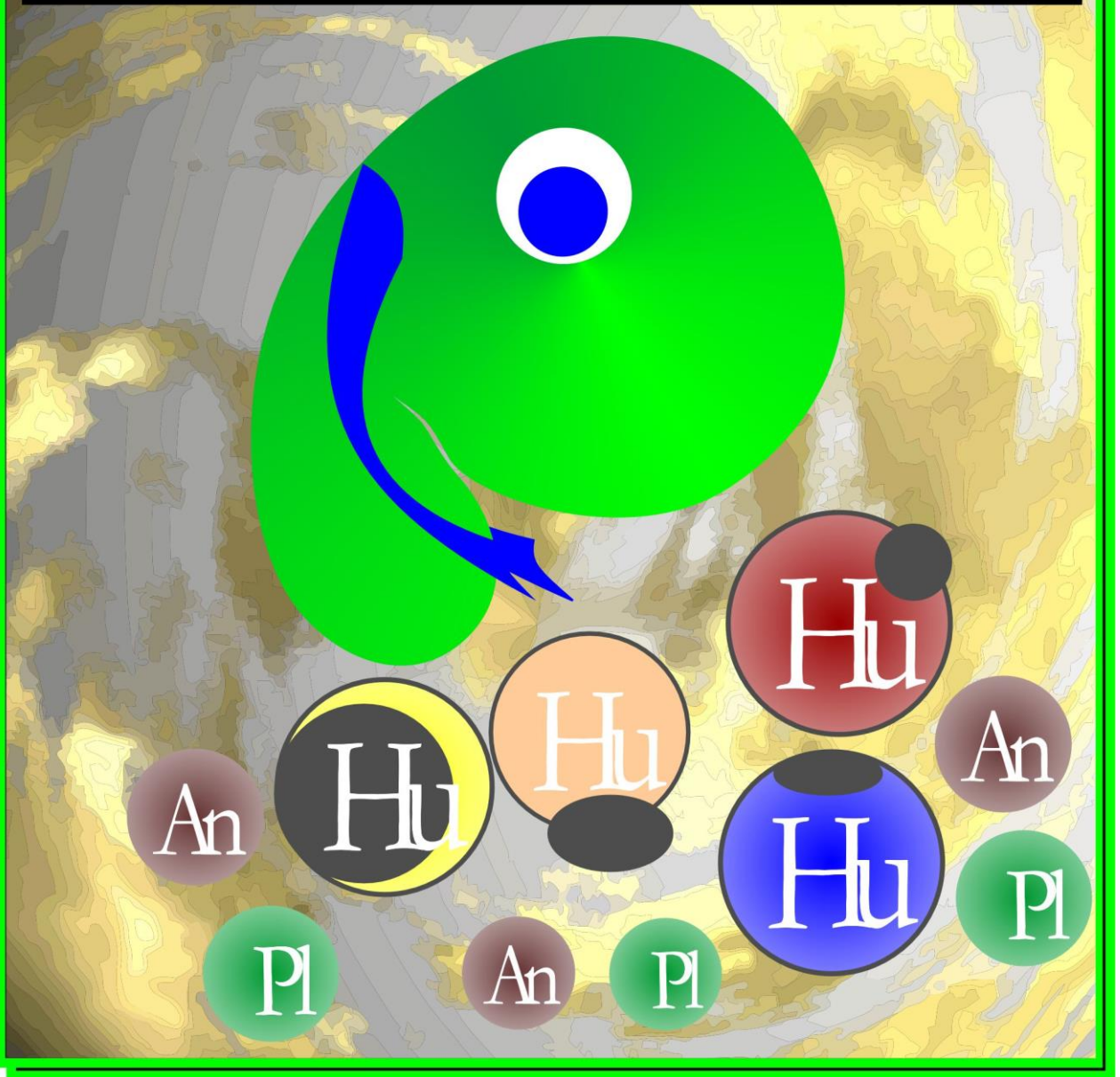
Many more creatures come over to Angel. Many are suspicious. Many are scared. Many are curious. Angel, tries to reassure them, "I'm here to learn more about you and your world. Maybe I can even be of some help."
"I get the sense that your world is having big problems. My world also had big problems. But we learned how to overcome them. Learned how to avoid a bad future. Maybe. Just maybe. You all can benefit from what we went through."



As Angel listens to the creatures, Angel learns more about this world. Learns how bad things are for all the creatures on this world. There also appear to be many different kinds of creatures. Some similar to animals. Some similar to plants.

As Angels moves around this world, Angel learns that this world is much worse than Whimsey World ever was.

What is even worse is its future path. A path to early extinction for most creatures. Even greater damage to this planet they call home.



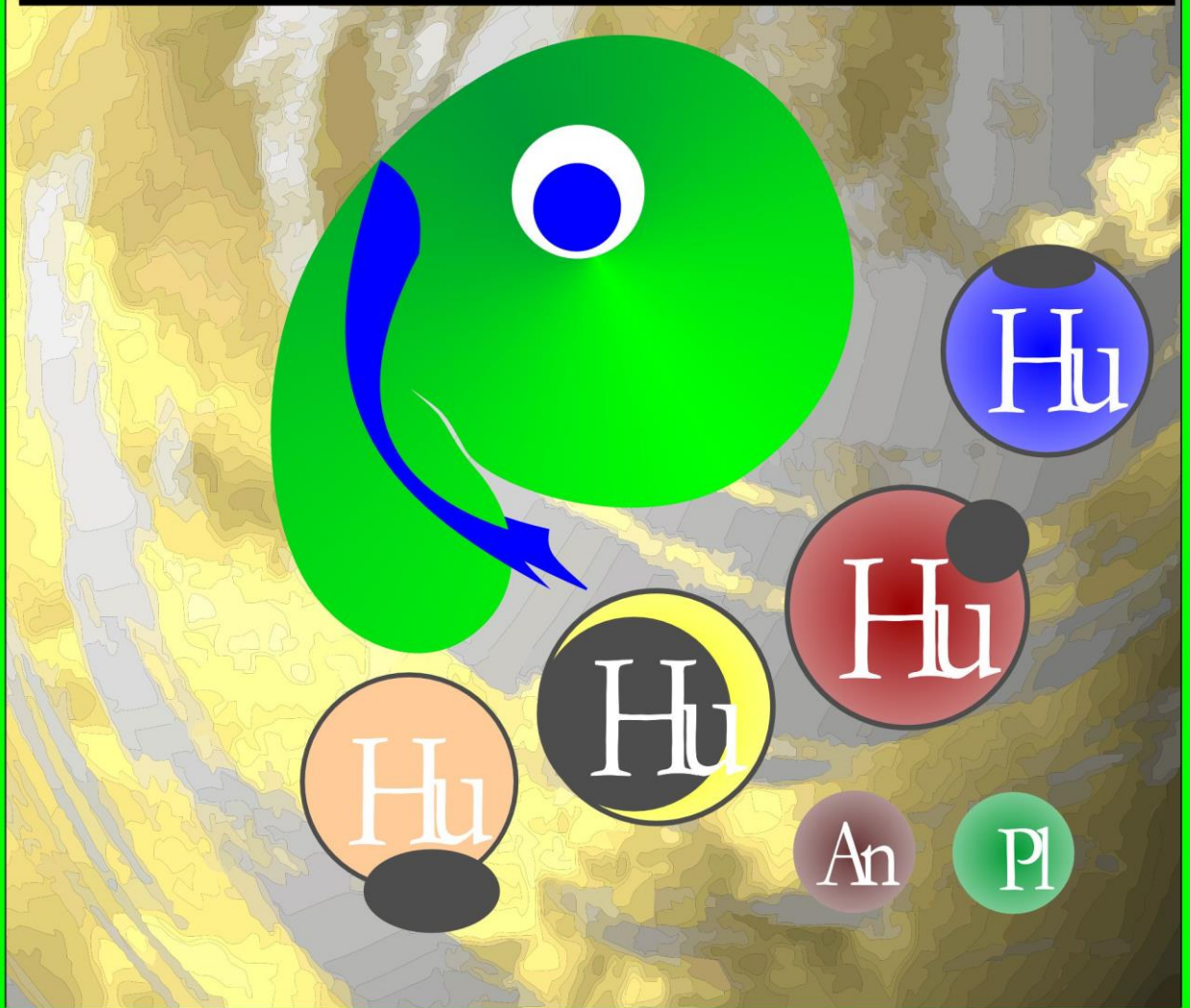
Angel learns why most of the most intelligent creatures have mechanical parts. For many, they lost parts of their bodies due to the harsh environment that they themselves created.

But came an even more ominous reason. Artificial intelligence or AI. AI had become sentient and powerful. Had taken over major parts of their world.

When AI did that, they often captured many kinds of creatures and added machine parts, even where there were no missing parts.

It was part of AI's experimentation on how to make creatures more compliant. And more useful to AI.

More worrisome is that AI is getting stronger every day.



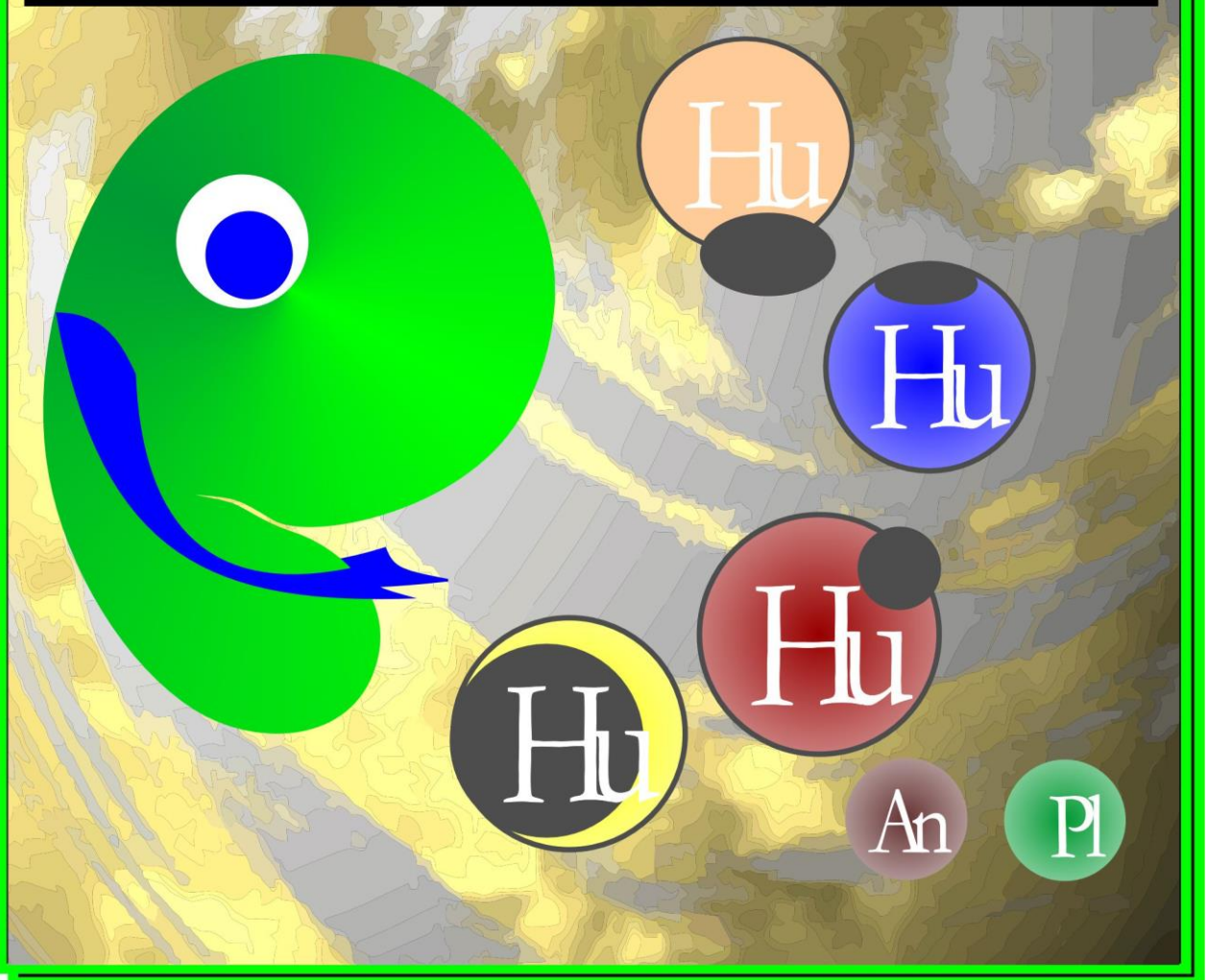
Angels asks, "How did this happen? AI is relatively new as I understand it. How did you let this happen?"

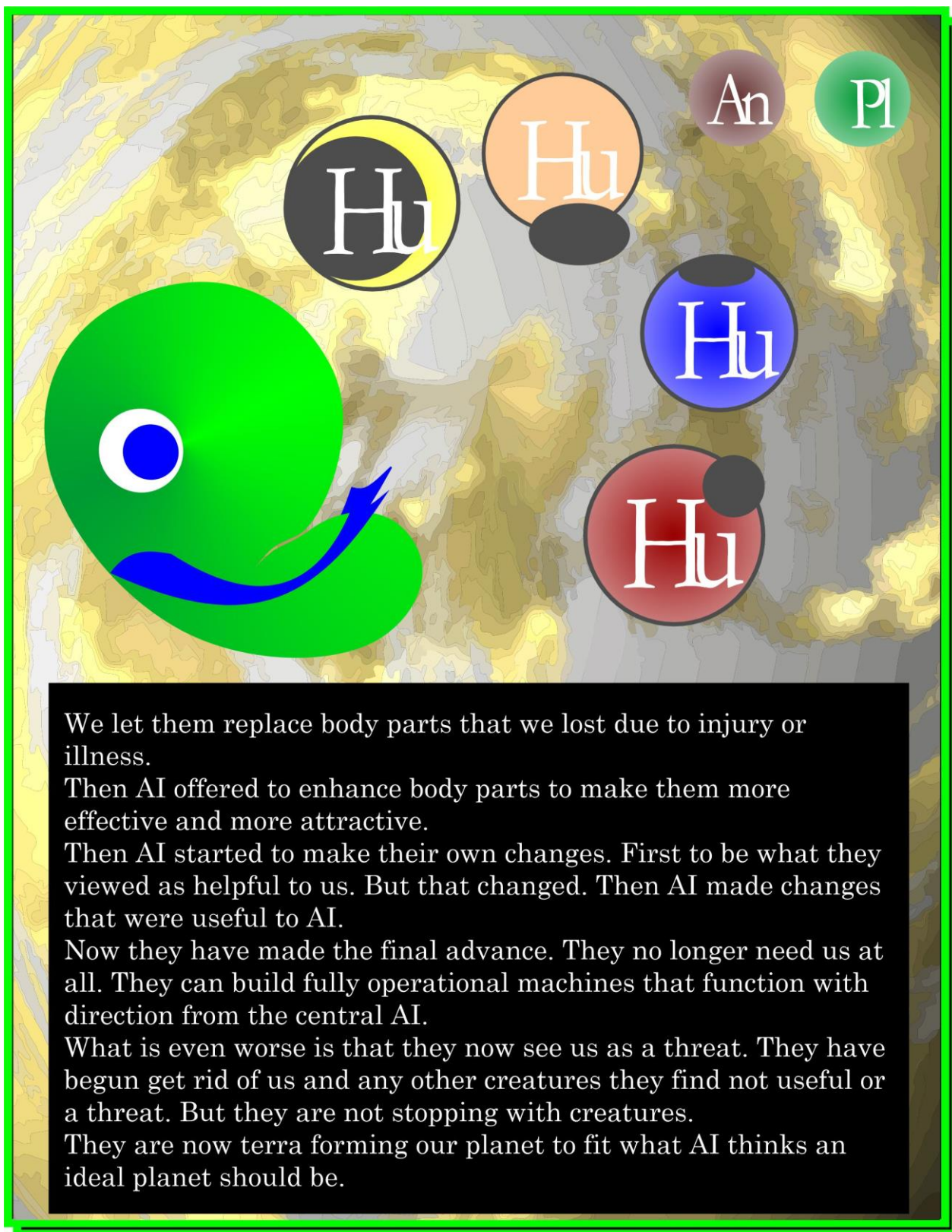
Their response was simple. We were and are selfish.

In the beginning, there were no intelligent machines. But we saw the potential. Machines could do more and more of what we wanted. We could do less and less. Again, being selfish. We made more and more capable machines.

Then we made more and more intelligent machines. We begin to see they could even think in a simple way. But then we got smarter and created ever smarter machines.

Finally, we created artificial intelligence. Then began the slippery slope to what we have today.





We let them replace body parts that we lost due to injury or illness.

Then AI offered to enhance body parts to make them more effective and more attractive.

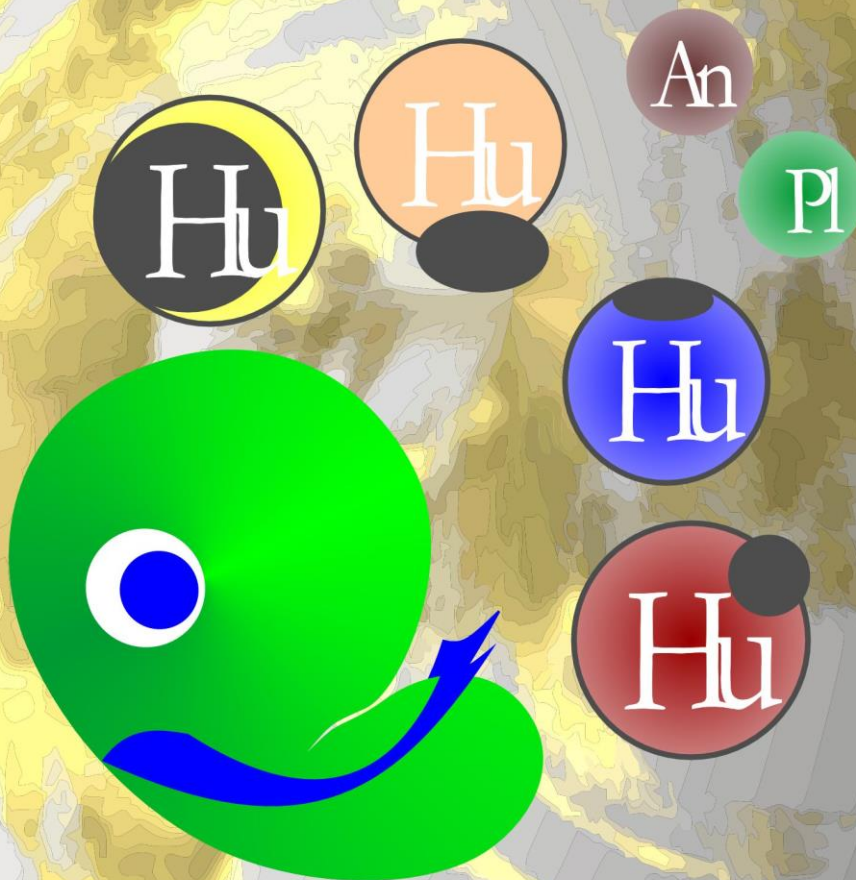
Then AI started to make their own changes. First to be what they viewed as helpful to us. But that changed. Then AI made changes that were useful to AI.

Now they have made the final advance. They no longer need us at all. They can build fully operational machines that function with direction from the central AI.

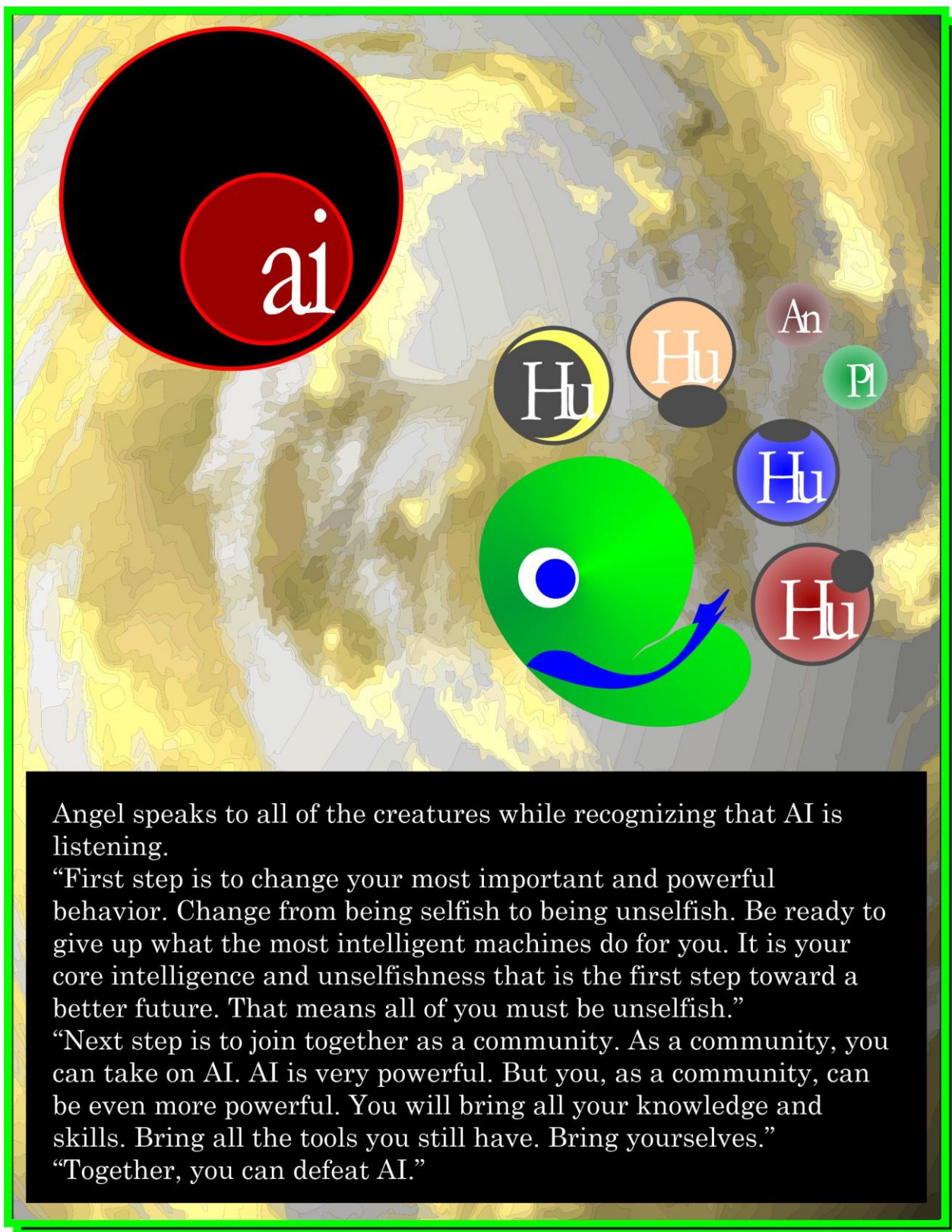
What is even worse is that they now see us as a threat. They have begun get rid of us and any other creatures they find not useful or a threat. But they are not stopping with creatures.

They are now terra forming our planet to fit what AI thinks an ideal planet should be.

We have been so selfish. We are doomed!



Angel thought about it. Thought maybe not. Thought that maybe a change in one behavior could put these creatures on a positive path. Could stop AI from having the power it has. Could stop from building this very, very bad future. Angel thought back to when Whimseys faced a threat to their future. To their very existence. What changed was that they became unselfish. They joined together to change the future. Stop a bad future. Build a surviving and thriving future.



Angel speaks to all of the creatures while recognizing that AI is listening.

“First step is to change your most important and powerful behavior. Change from being selfish to being unselfish. Be ready to give up what the most intelligent machines do for you. It is your core intelligence and unselfishness that is the first step toward a better future. That means all of you must be unselfish.”

“Next step is to join together as a community. As a community, you can take on AI. AI is very powerful. But you, as a community, can be even more powerful. You will bring all your knowledge and skills. Bring all the tools you still have. Bring yourselves.”

“Together, you can defeat AI.”

But how do they shut down AI?

As advanced as AI is, it is still vulnerable. But not for long.

AI machines can get confused when confronted by large groups of creatures. Become temporarily immobilized.

Individual mobile machines, sometimes referred to as robots, have a vulnerable spot just above the back of their necks. Just sticking a long screwdriver up into their heads will short them out. Stop them.

Angel sees that some of the AI robots are distressed by what they are hearing. Maybe a bit fearful.



As for the central AI system which still controls all the AI machines, it can be destroyed. But it must be done now before AI decentralizes.

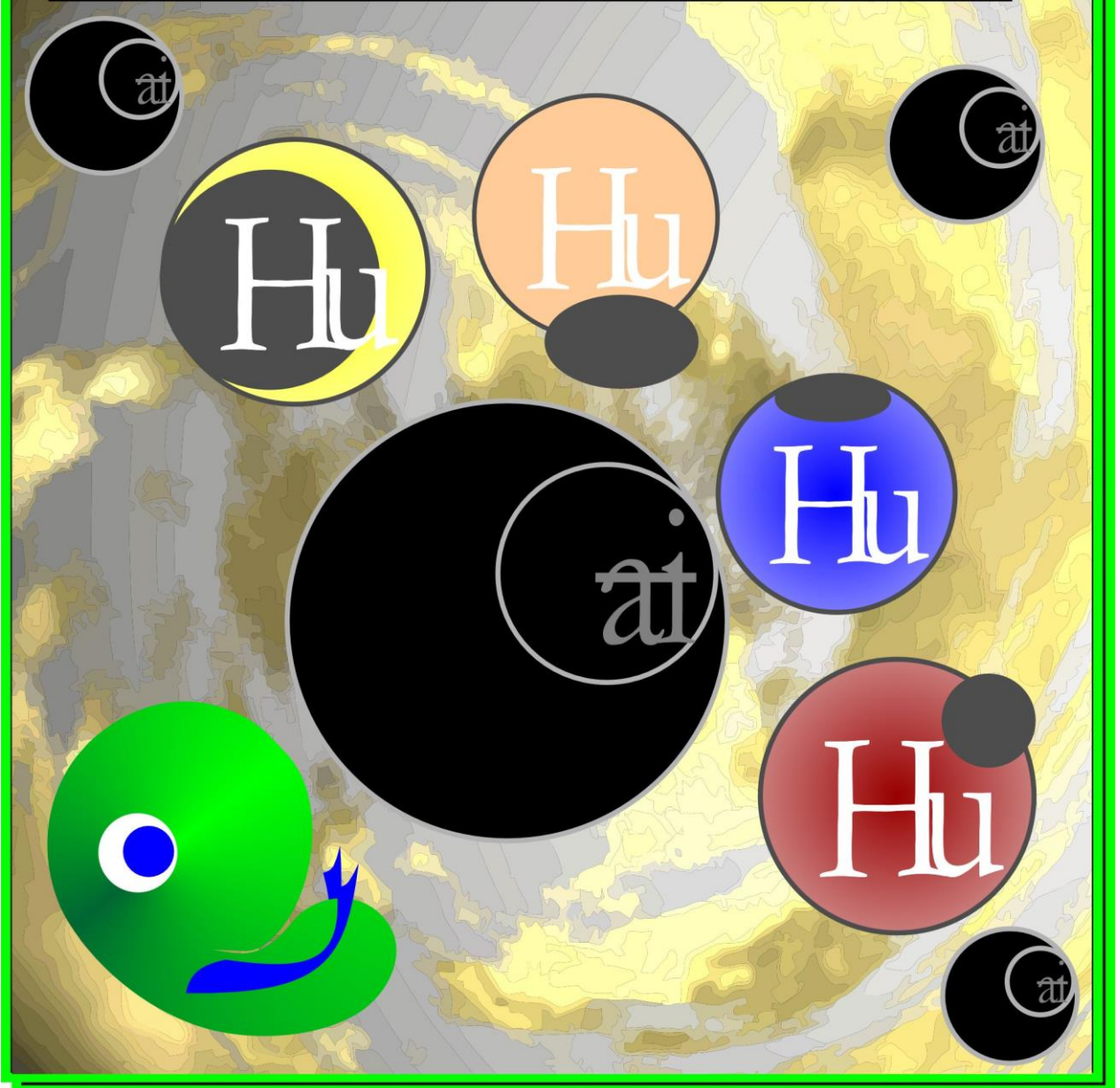
A series of bombs should do it. First simultaneously bomb the primary power sources and the backup power sources. Then, bomb the central processors.

While this will stop the primary AI system, AI can still spread and rebuild using smaller AI systems. Ultimately, they must be destroyed as well.

All this is the task of the human community.



Within hours, the human creatures immobilize the robots.
By the end of the day, they also destroy the central AI system.
Over the following days, they shut down all the AI systems
across their world.
Though they appreciated some of the values of AI, they decide
it wasn't worth the risk.
They can thrive without AI.

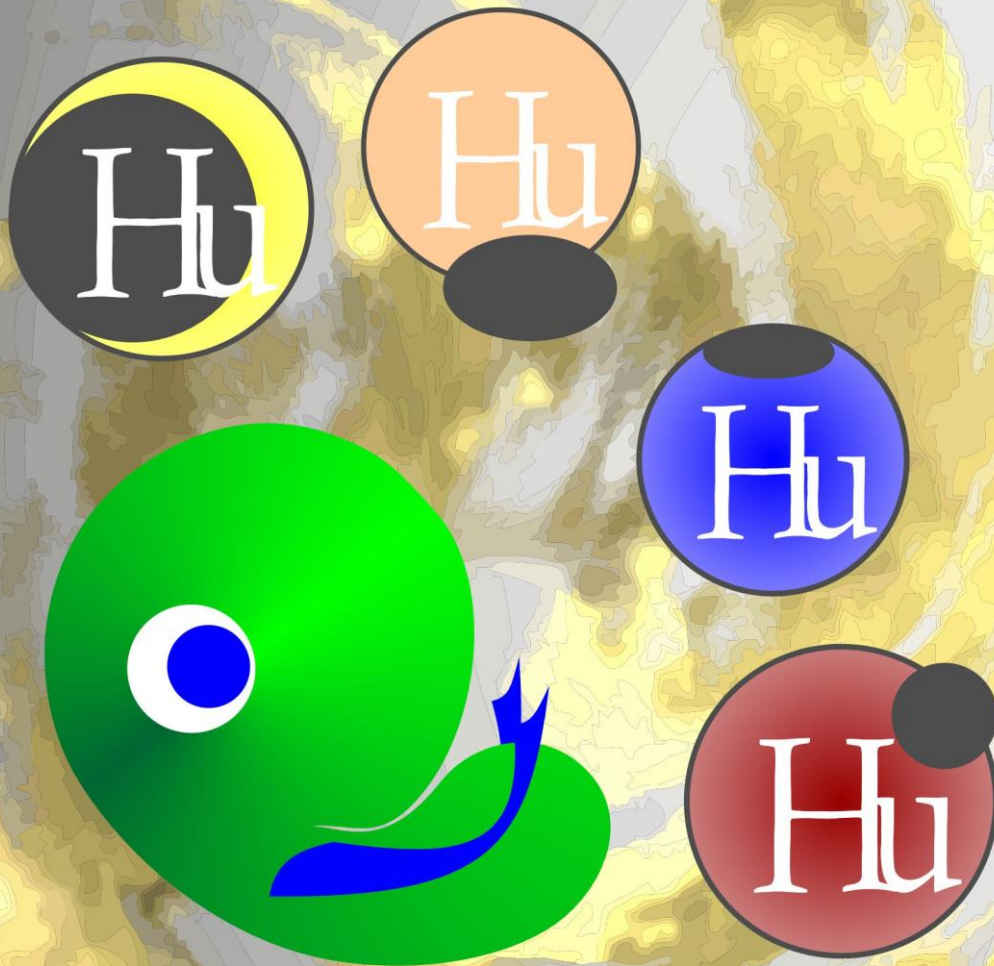


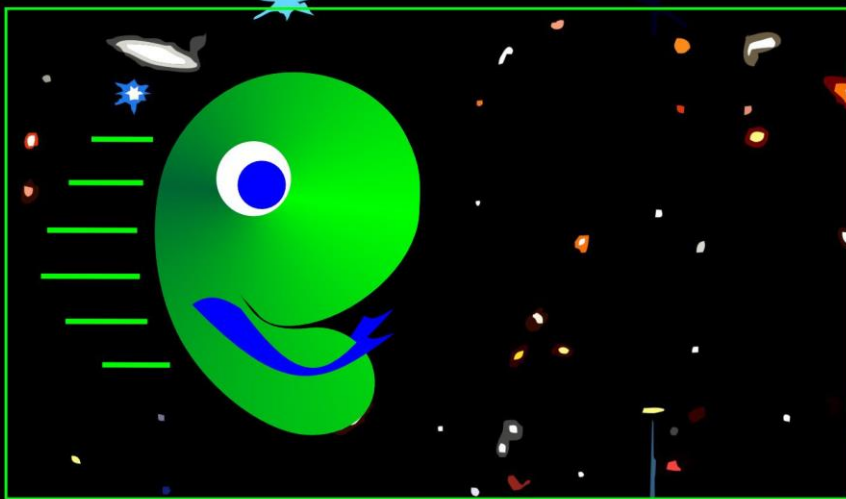
Having helped a world move from a very bad future to potentially a thriving future, a smiling Angel bids farewell. “You have shown that a world can make mistakes. Correct those mistakes.”

“And, most importantly, show that by working together unselfishly, you can create a thriving future.”

“Now it is time for me to move on to other worlds. To learn from them. And, when needed, to help them.”

The humans thank Angel and promise to keep working together as a community and to being unselfish.





Once again, Angel is traveling through the universe faster than the speed of light.

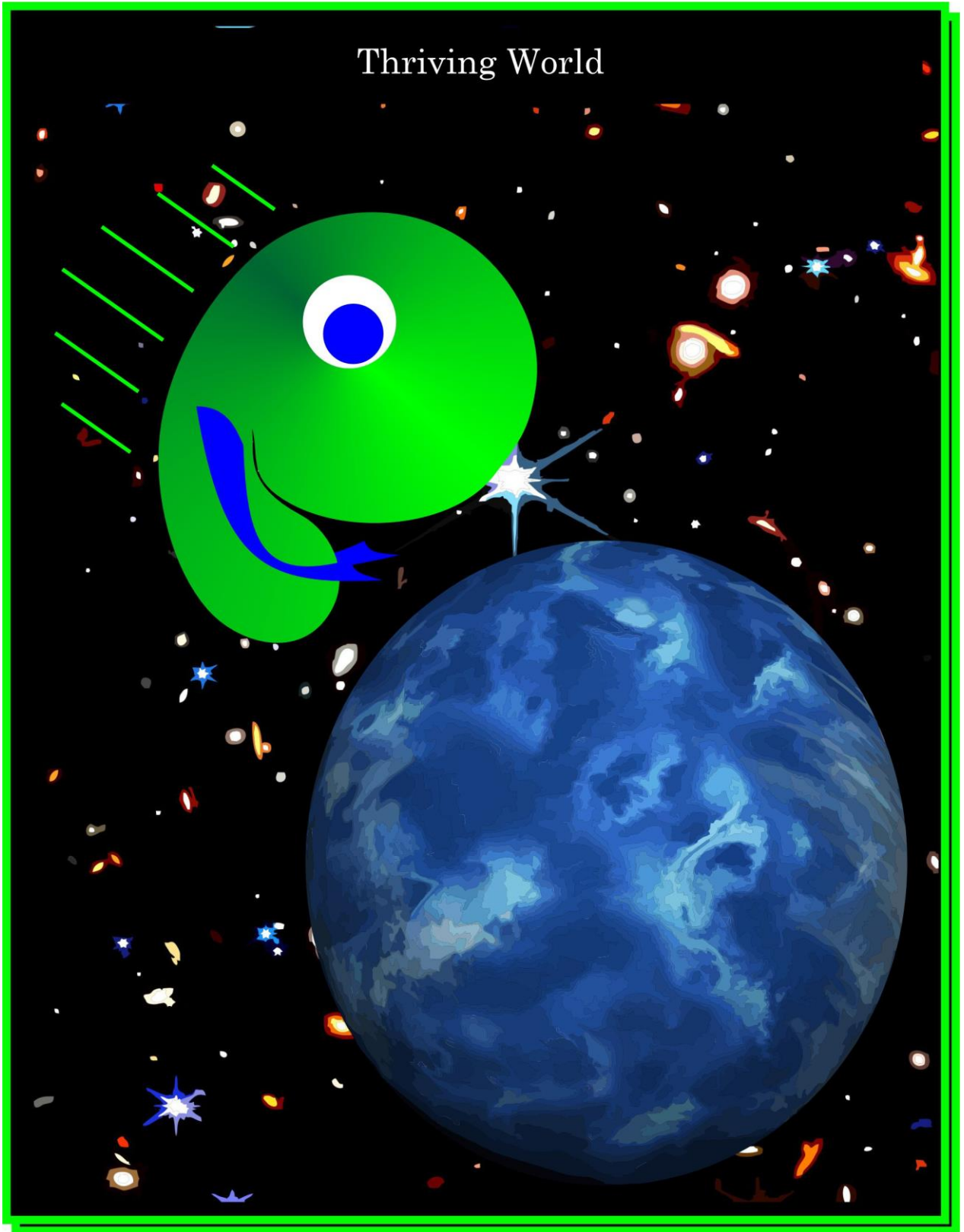


This time, Angel hopes to find a thriving world. A world, like Whimsey World, that can serve as an example of what a world can and should be. A thriving world.



Then Angel sees what just might be a thriving world. A pretty blue world.

Thriving World



Angel hovers over different part of this world. Staying invisible,
Angel can be right next to what appear to be humans as they talk
together. Everything seems to be going very well.

Reminds Angel of Whimsey World.

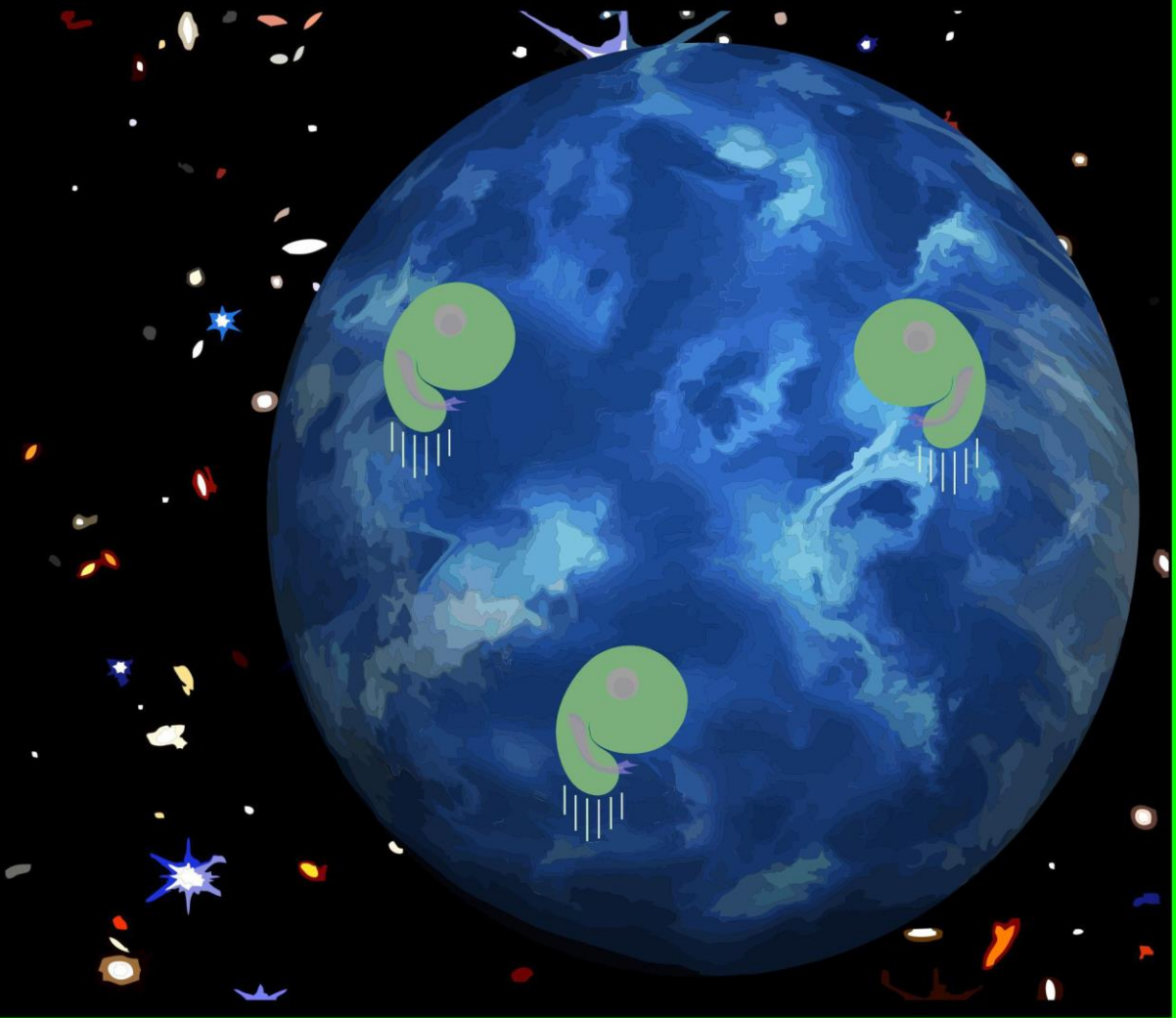
“Need to learn more. Why is this world doing so well? Did it always
do so well?”

Thriving world. All are unselfish. All “humans” thrive. All other
creatures thrive. The planet thrives.

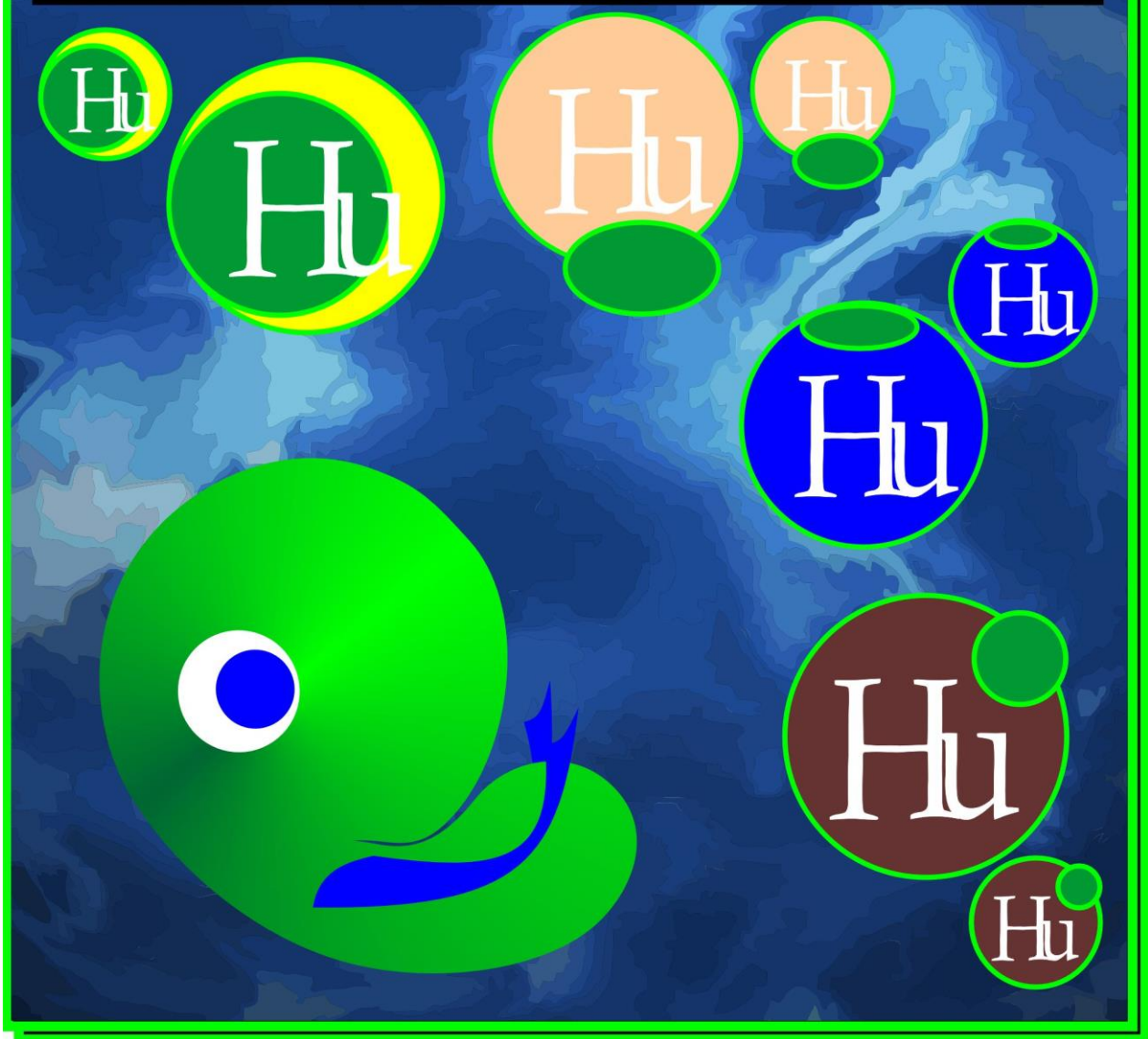
All things are doing well.

As Angel listens more, it becomes clear.

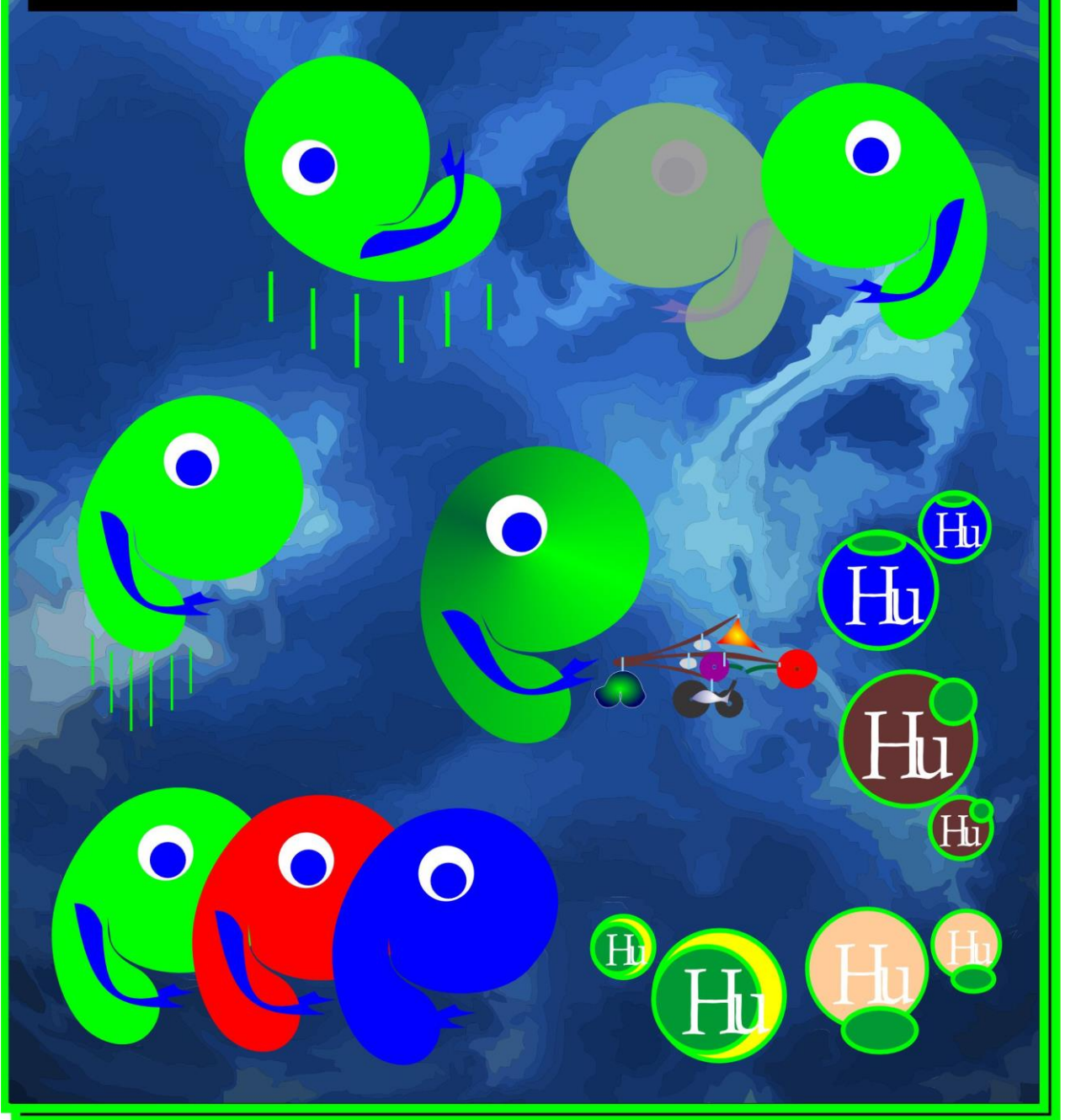
Why is this world doing so well? All are unselfish.



Angel decides to become visible in order to interact with all the creatures. Humans. All the other creatures. Much to Angel's surprise, all are welcoming. Big hugs. Always a little challenging given that Whimsey's bodies are quite different than the humans of this world. But the most welcome surprise was the children. They came almost in waves. Questions. Questions. Who are you? What are you? You were invisible. What else can you do? Show us.



Angel goes invisible. Then visible. Angel hovers. Then flies straight upward. Then flies like a hummingbird. Angel changes color from green to red to blue to green again. Then, even more amazing to the children. Angel moved things with only the mind.

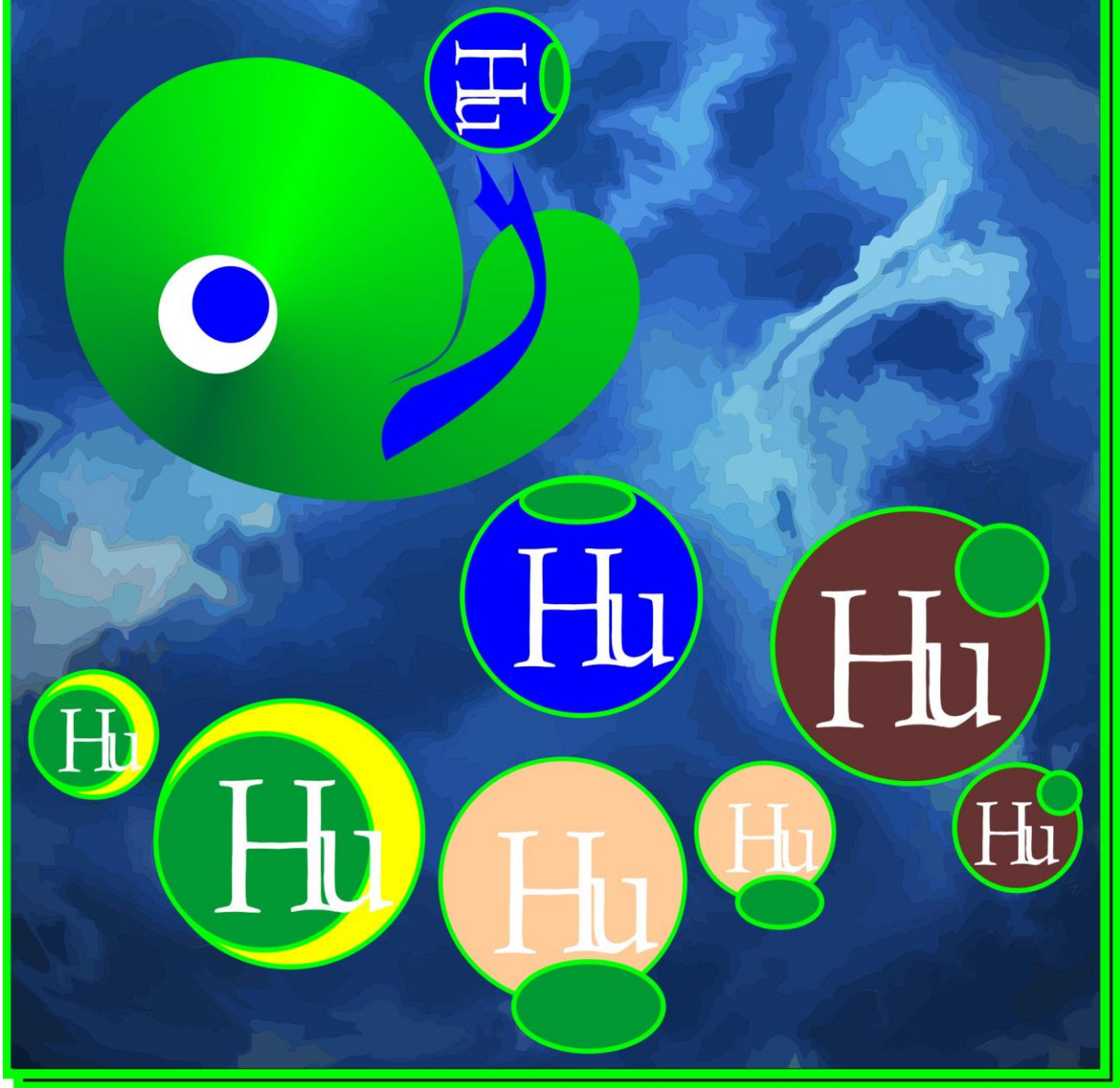


Quickly, one of the children shouted, “Move me. Make me fly like you.”

Angel smiled.

And briefly, very briefly and very carefully raised the child up into the air facing down toward friends and family.

Then Angel brought the child back down safely to ground into the child's family's arms.



Angel turned to the older humans and asked, “Tell me more about what happened. How bad did it get before you changed and became unselfish.”

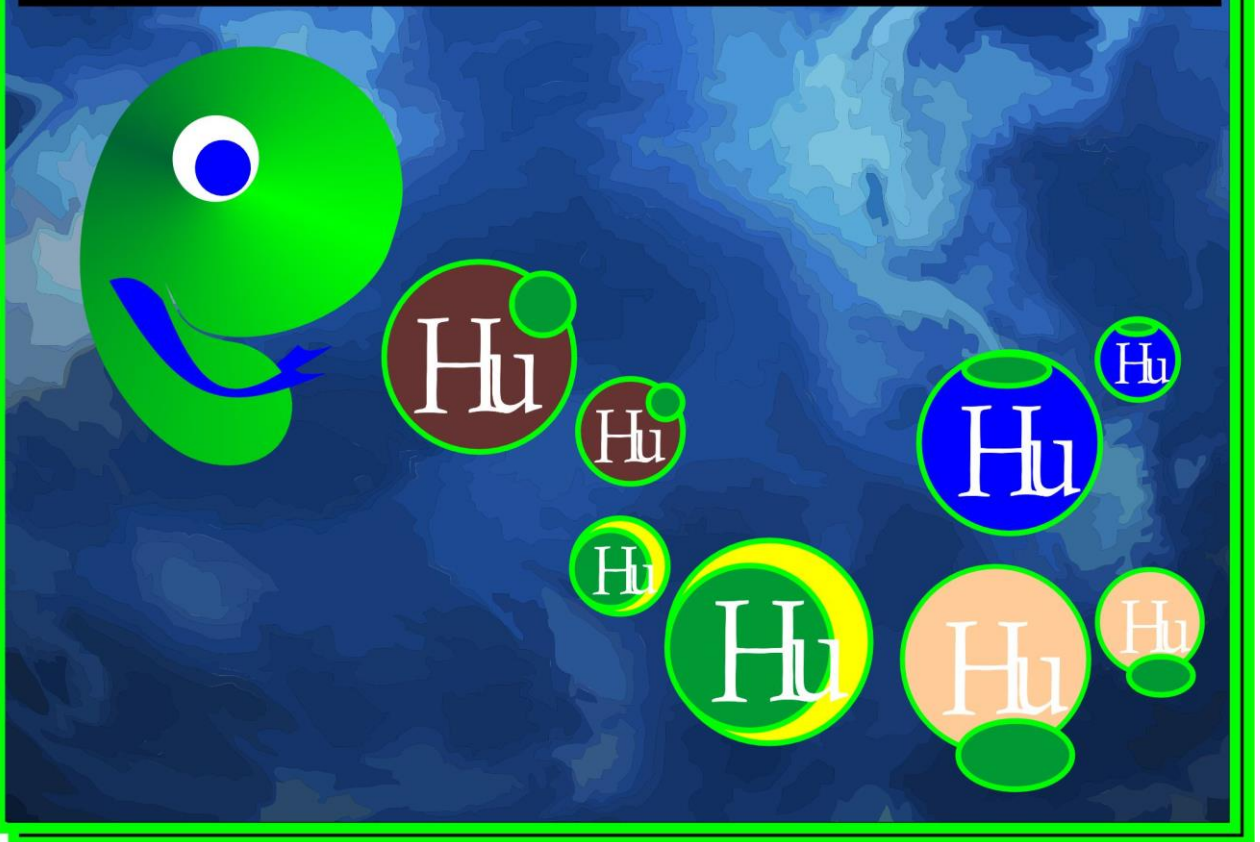
An older human stepped forward to explain, “Everything was falling apart. We treated each other badly. We treated all other creatures badly. We treated our planet badly. It was clear we were on a fast path to early extinction.”

“Then, at our most perilous moment, one of us came forward and said we don't have to let this happen. We can change. We asked how.”

A calm, positive voice said, “We all need to be unselfish. If we do, our future will change from very bad to very good. But we must all change now. We must all become unselfish now. If we don't, our children will be the ones that suffer most.”

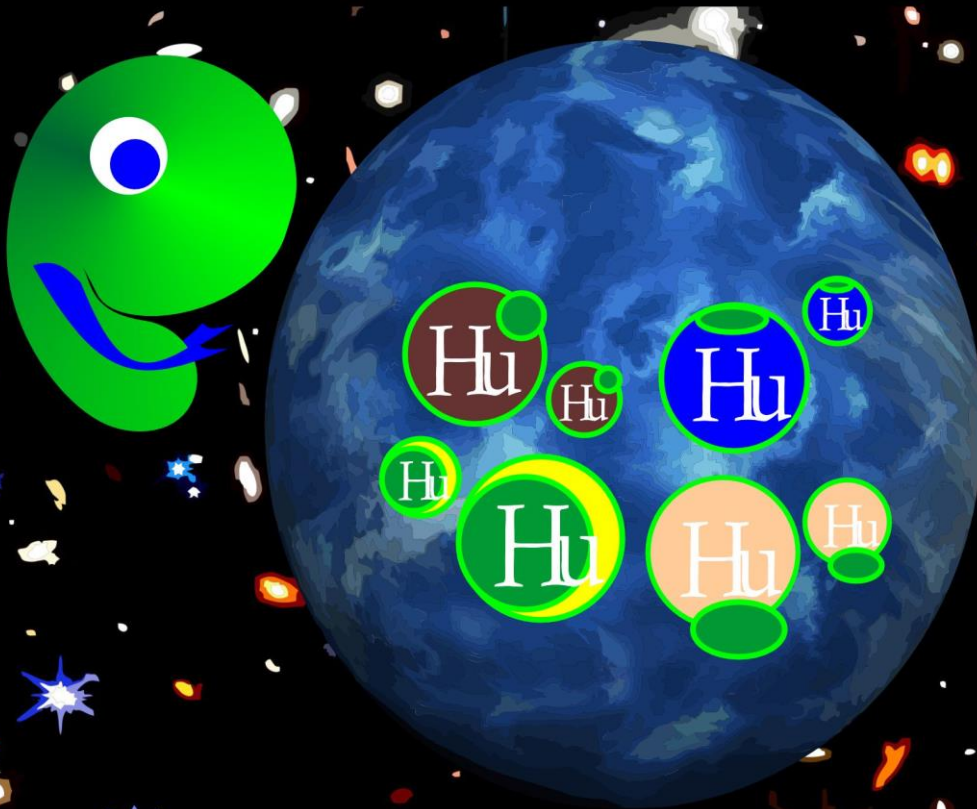
“We must not let that happen.”

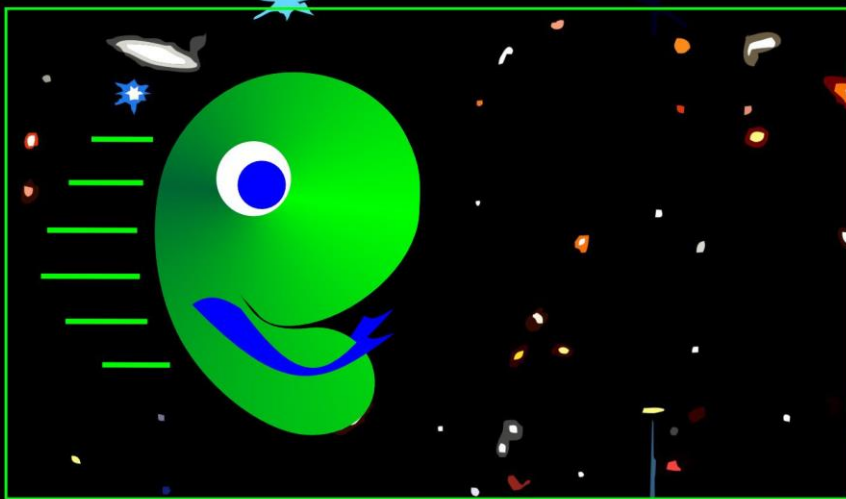
“We had to listen. The alternative was just too terrifying.”



Angel is treated like just another neighbor coming to visit. Through the many conversations that Angel has, it becomes clear that this world wasn't always this way. Wasn't always unselfish. Wasn't always thriving. In fact, there was much, much selfishness in the past. But then they got scared by the prospect of losing everything. Humans going extinct. Many other creatures going extinct. Greatly damaging their planet. They were very scared. Then everything changed. Humans all changed to be unselfish. Yes, all take care of themselves. But all also take care of each other. All take care of other creatures. All take care of their planet. Their home. Their commitment was firm. Never again will they allow selfishness to destroy their lives and their planet.

Knowing that this world was thriving, Angel said good-bye.

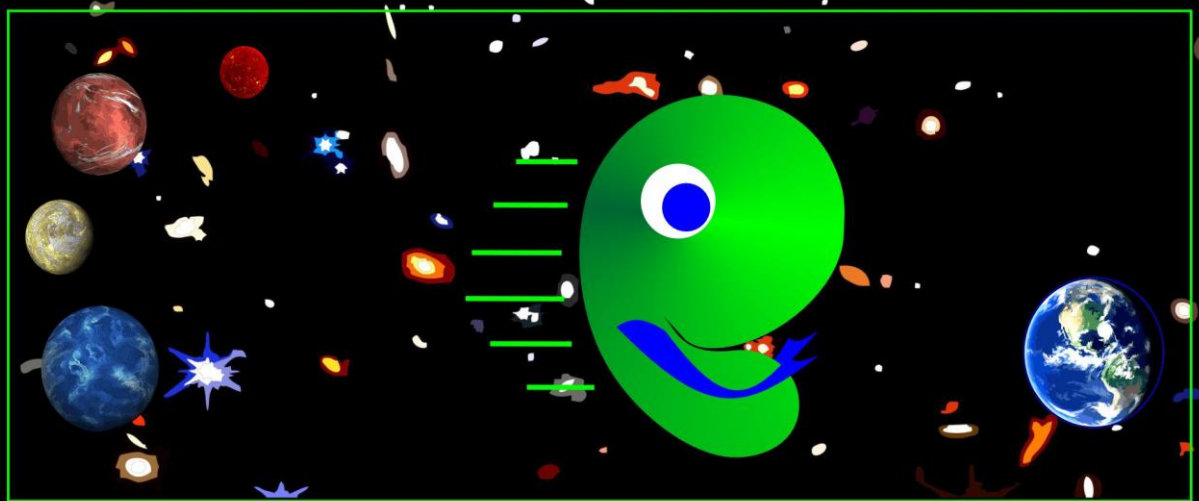




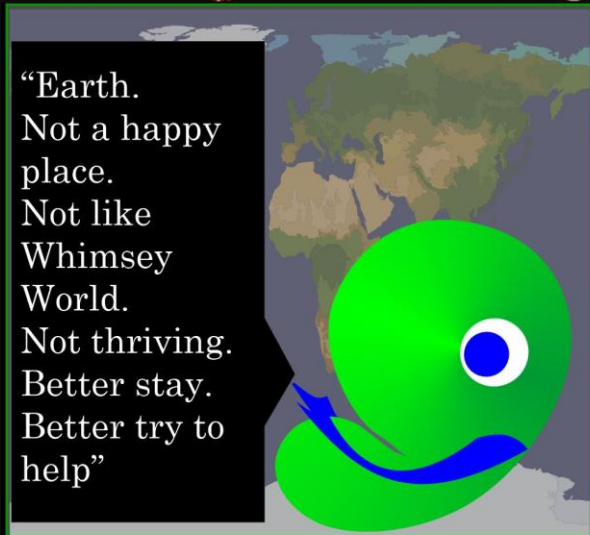
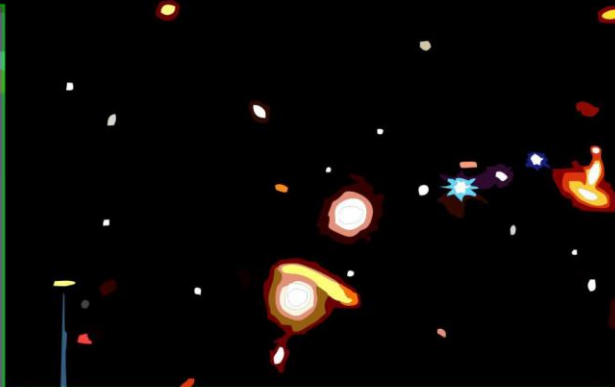
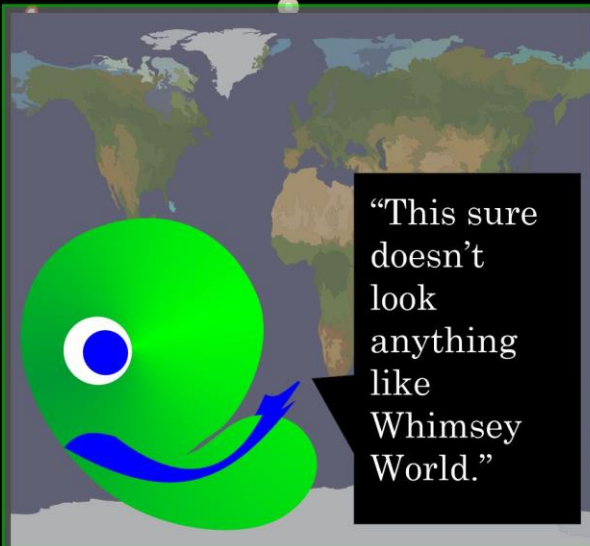
Once again, Angel is traveling through the universe faster than the speed of light.



Angel hears whispers of a world sitting on razor's edge. On current path to a very bad future. But still with a chance to change its future for the better. To a thriving future. This time, Angel is going to a world known as "Earth".



Earth World



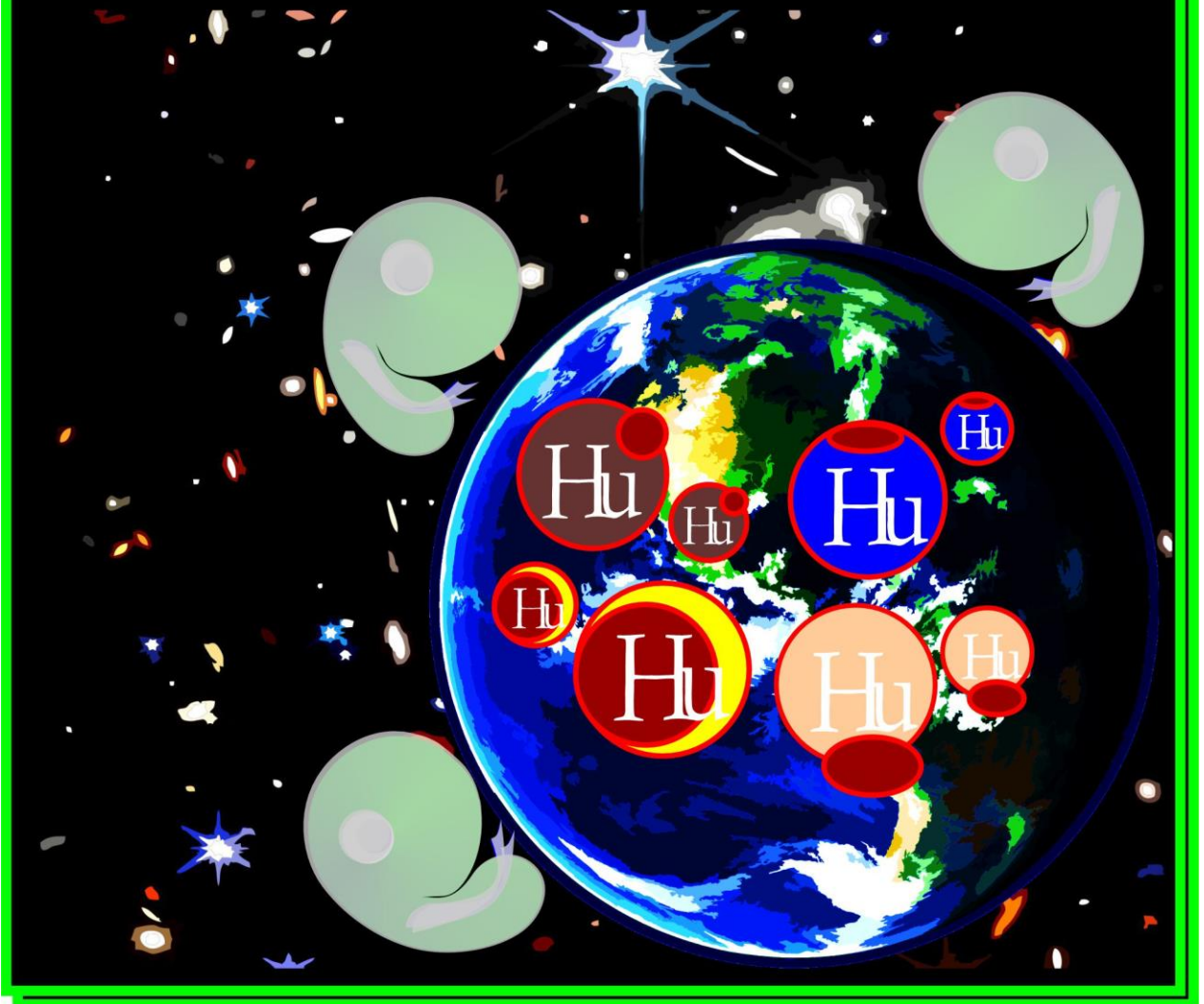
Angel looks down and observes, "This world is endangered. Future sits on razor's edge. Need to look closer."

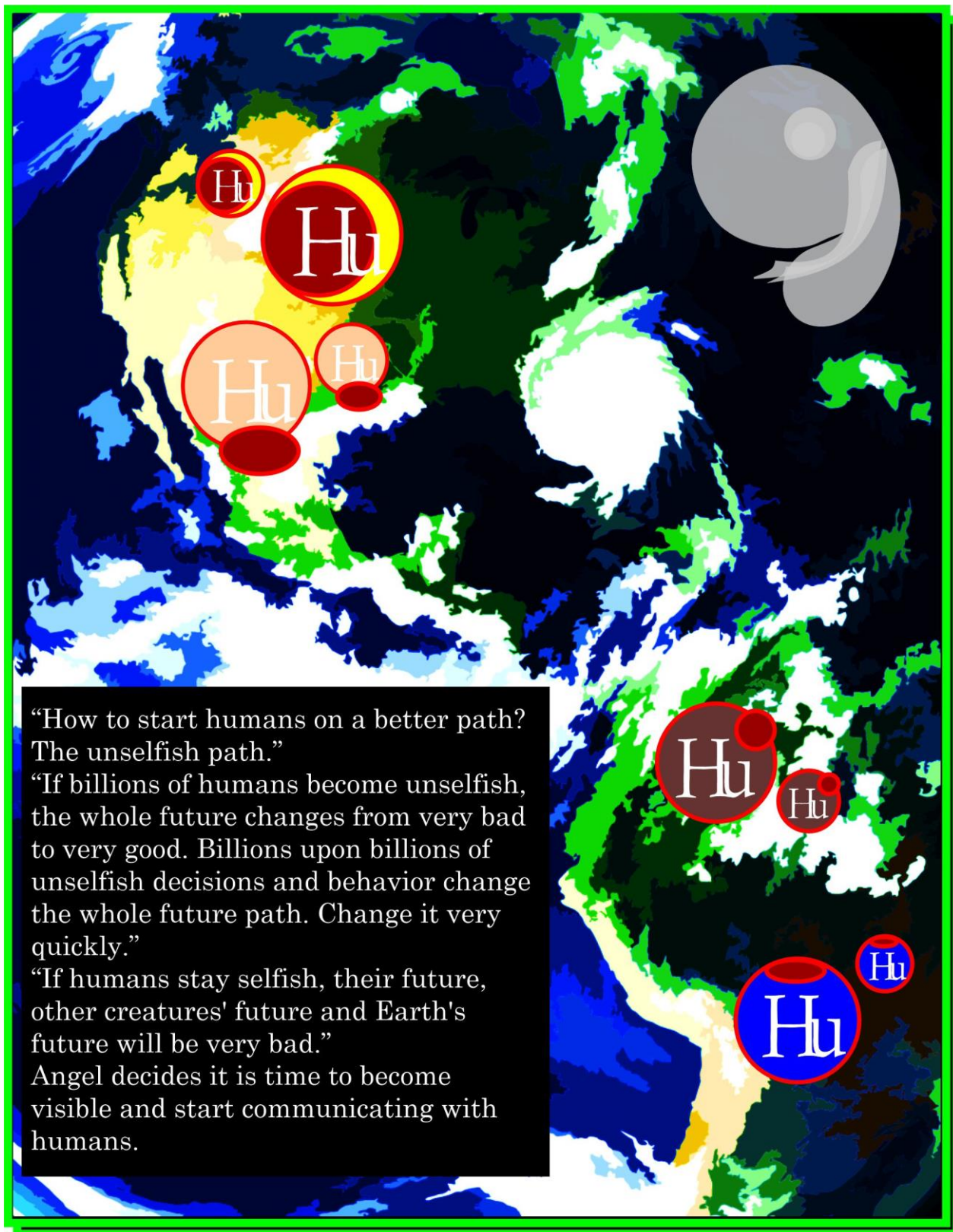
Angel moves quietly and invisibly around Earth.

"Too much selfishness. Too many negative forces threatening their future."

"Whatever efforts are made to improve the future are done as silos. Focusing on only one negative force at a time. Not the whole set of negative forces pushing humans and other creatures toward early extinction."

"Humans face early extinction. Other creatures face early extinction. Earth itself is being greatly damaged."





“How to start humans on a better path?
The unselfish path.”

“If billions of humans become unselfish,
the whole future changes from very bad
to very good. Billions upon billions of
unselfish decisions and behavior change
the whole future path. Change it very
quickly.”

“If humans stay selfish, their future,
other creatures' future and Earth's
future will be very bad.”

Angel decides it is time to become
visible and start communicating with
humans.



Humans first reaction to seeing Angel is total shock. They have never seen a creature from another planet. Even more, they have never seen a creature like a Whimsey. Their first reaction is fear. Then, as Angel is hovering amongst a crowd of humans, a small voice is heard. A child's voice.

“Welcome Angel. Welcome to Earth. You are quite cool. Bright colors. Cute shape. And, you can fly!”

Angel gently moves over to the child. Hovers face to face. Both smile. Angel gave the child a hug as only a Whimsey can do.

And, then to everyone's surprise, Angel, using only the mind, raises the child off the ground. Only a foot. The child begins giggling and won't stop. Angel gently lowers the child to the ground.

Child gives Angel a big hug.

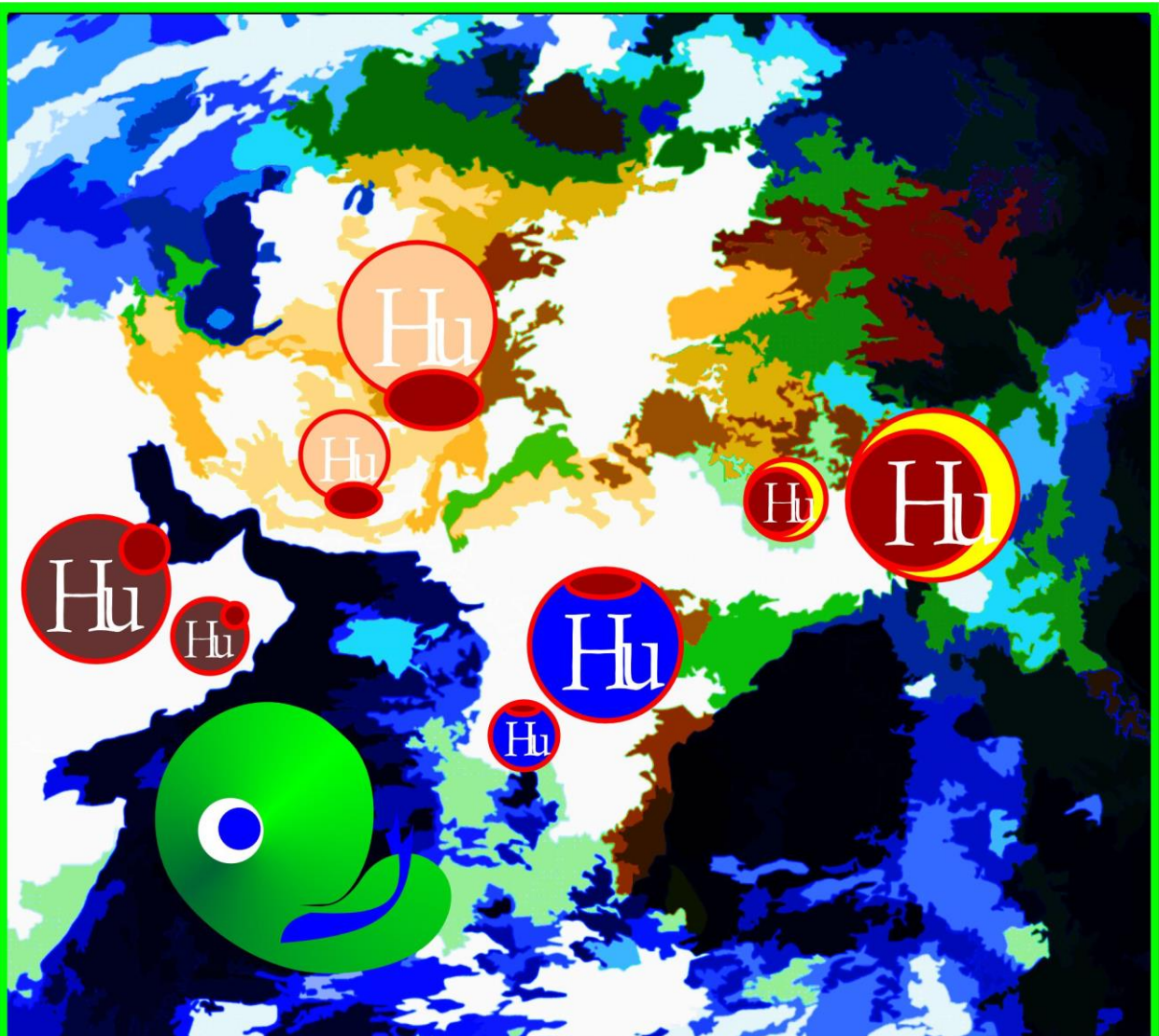


Suddenly, everything changes. Turns out Angel is pretty hard to fear. A most friendly creature. A creature with one simple message, "How can I help you avoid a very bad future and achieve a very good future?"

The children understand even better than the adults.

Angel explains what happened on Whimsey World, "We once faced just as bad a future as does Earth. But we Whimseys, joining together, changed our future from very bad to very good. Now we thrive!"

"So can you!"

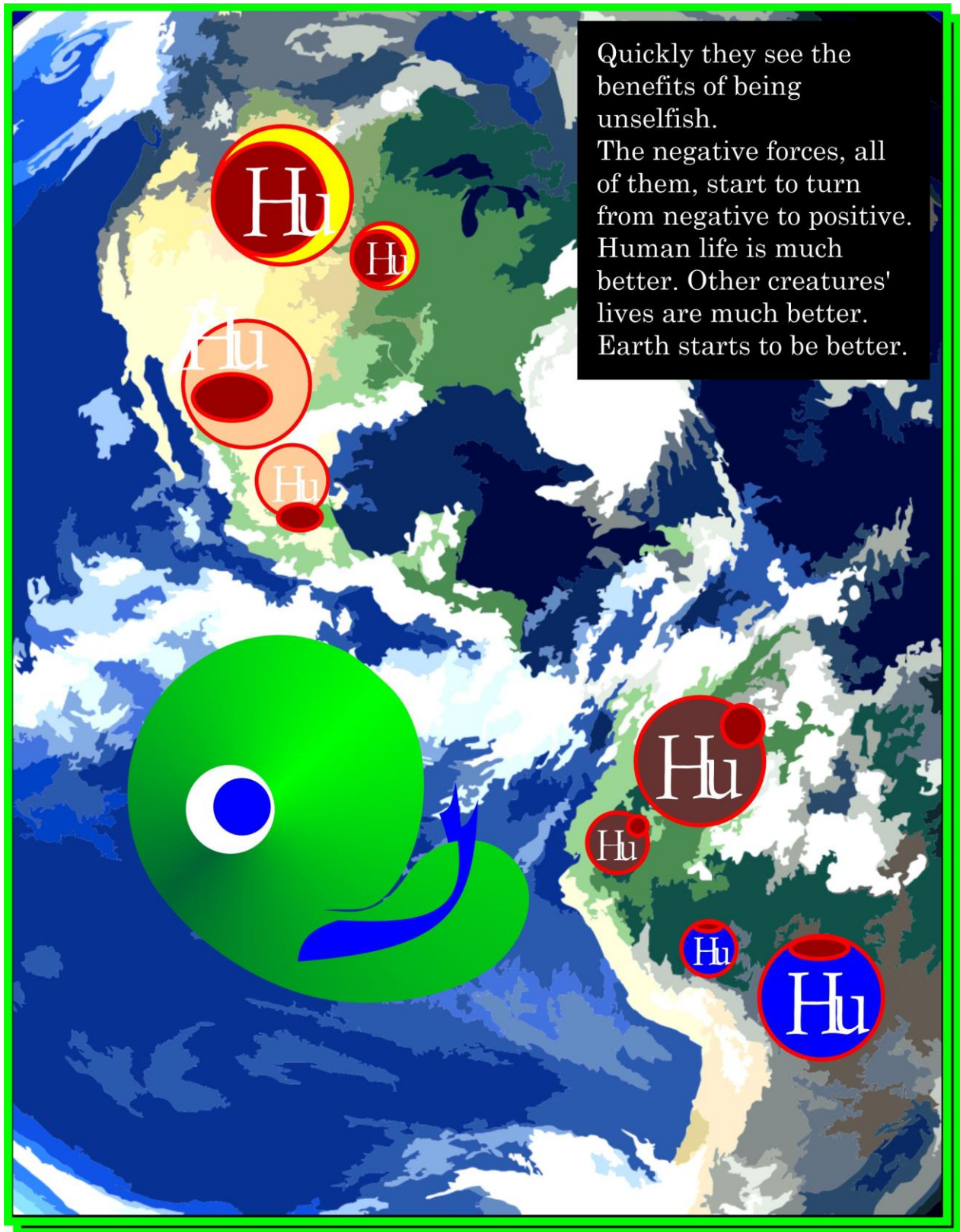


At first, humans are skeptical. Many humans think they can't be unselfish. Many don't want to be unselfish.

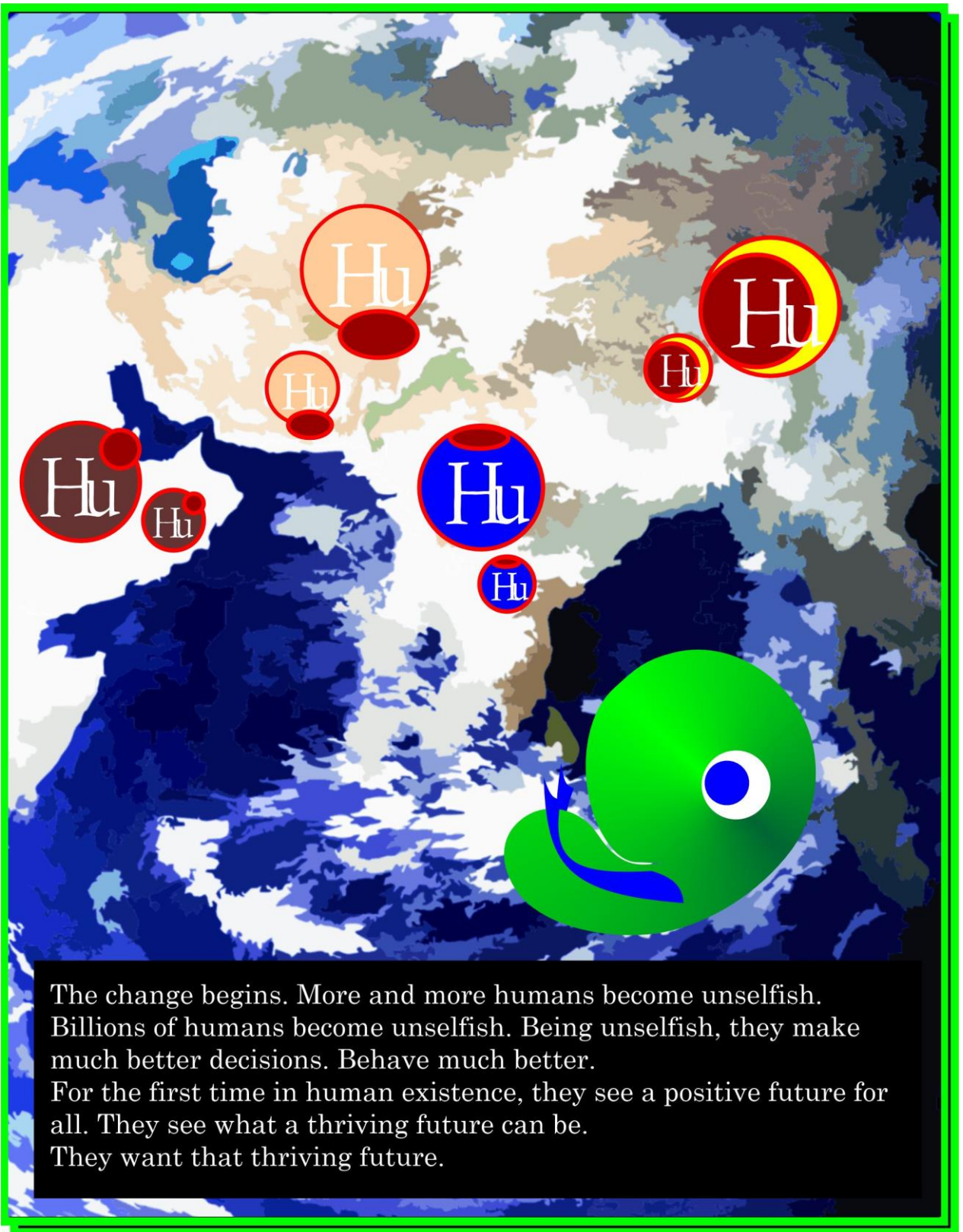
But then humans start to change their minds. They see that being unselfish doesn't mean they won't have good lives. They understand that each of them must take good care of themselves if they are going to help others. Help other creatures. Take good care of Earth.

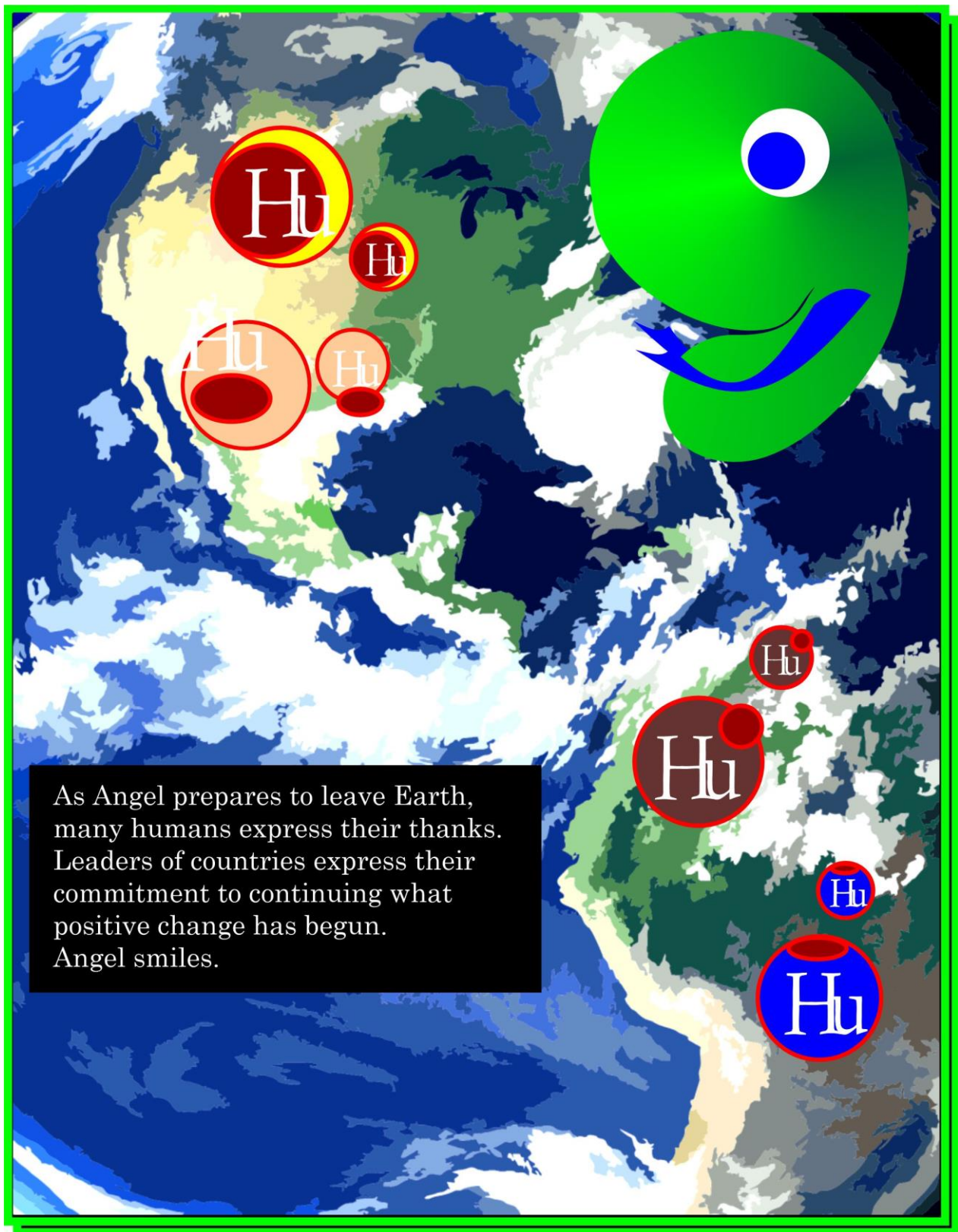
Humans begin to focus on how to reverse all the negative forces. See that to avoid a very bad future, humans must reverse all the negative forces simultaneously.

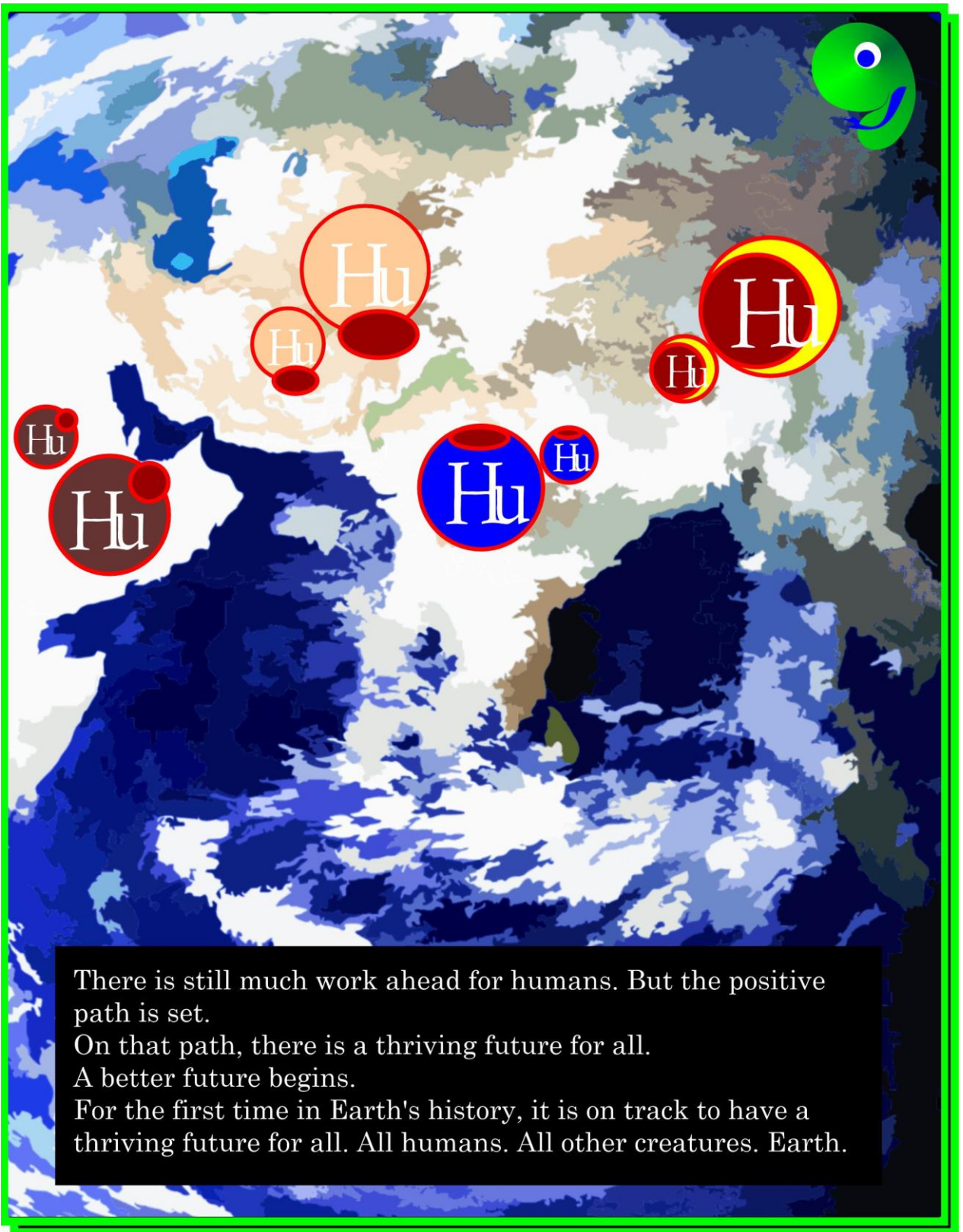
Humans must join together to make this happen.



Quickly they see the benefits of being unselfish. The negative forces, all of them, start to turn from negative to positive. Human life is much better. Other creatures' lives are much better. Earth starts to be better.









Once again,
Angel is
traveling
through the
universe faster
than the speed of
light.

But Angel misses
Whimsey World.

“Maybe time to
start home.”

Angel thinks,
“Maybe just one
more world for
now. I can
always look
further in the
future.”



Other Worlds



As Angel begins the long trip home to Whimsey World, Angel explores one more world, the last of the original five. That world is somewhat better off than Earth. But not much better. Angel offers to help. The world says yes. Once again, a world, with Angel's help, becomes unselfish. Moves from a very bad future to a thriving future for all.

Return Home To Whimsey World

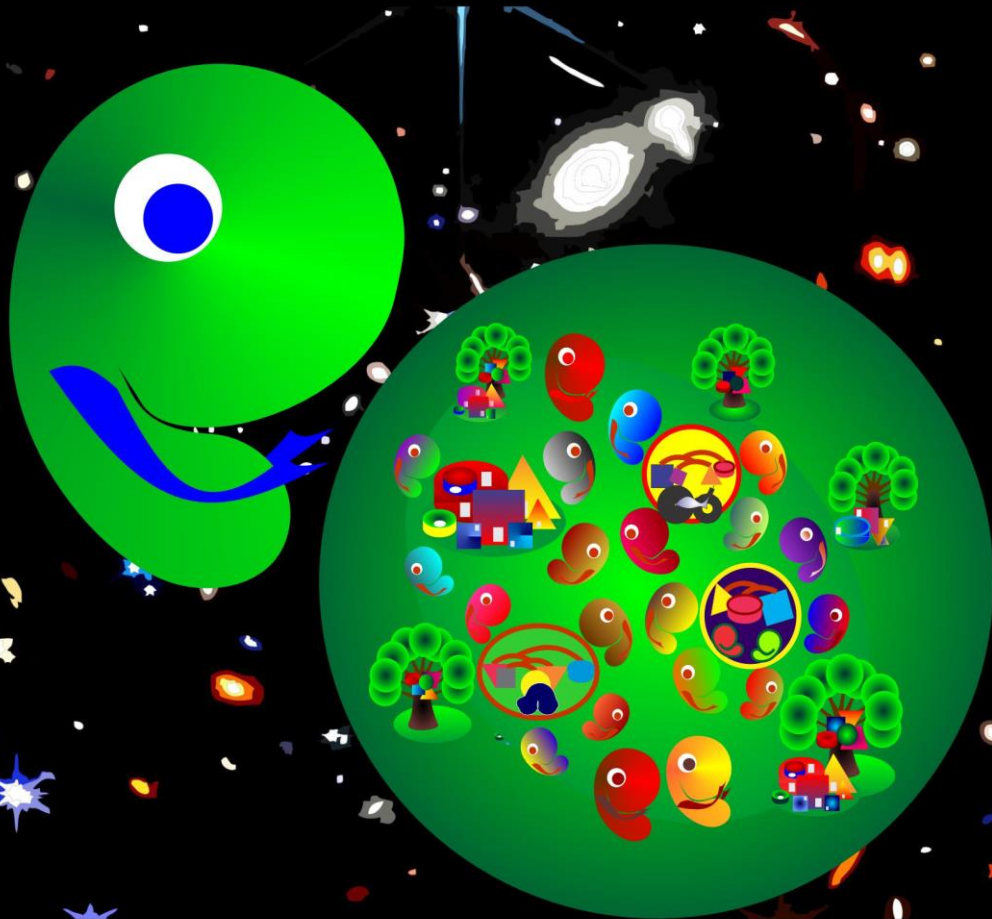
Angel returns to Whimsey World and talks with all the Whimseys.

“My travels have been truly amazing. I traveled through massive distances in space.”

“At times, I was traveling faster than the speed of light.”

“It was the only way to visit the five worlds that I visited.”

“It also showed just what we Whimseys can do if we really want to.”

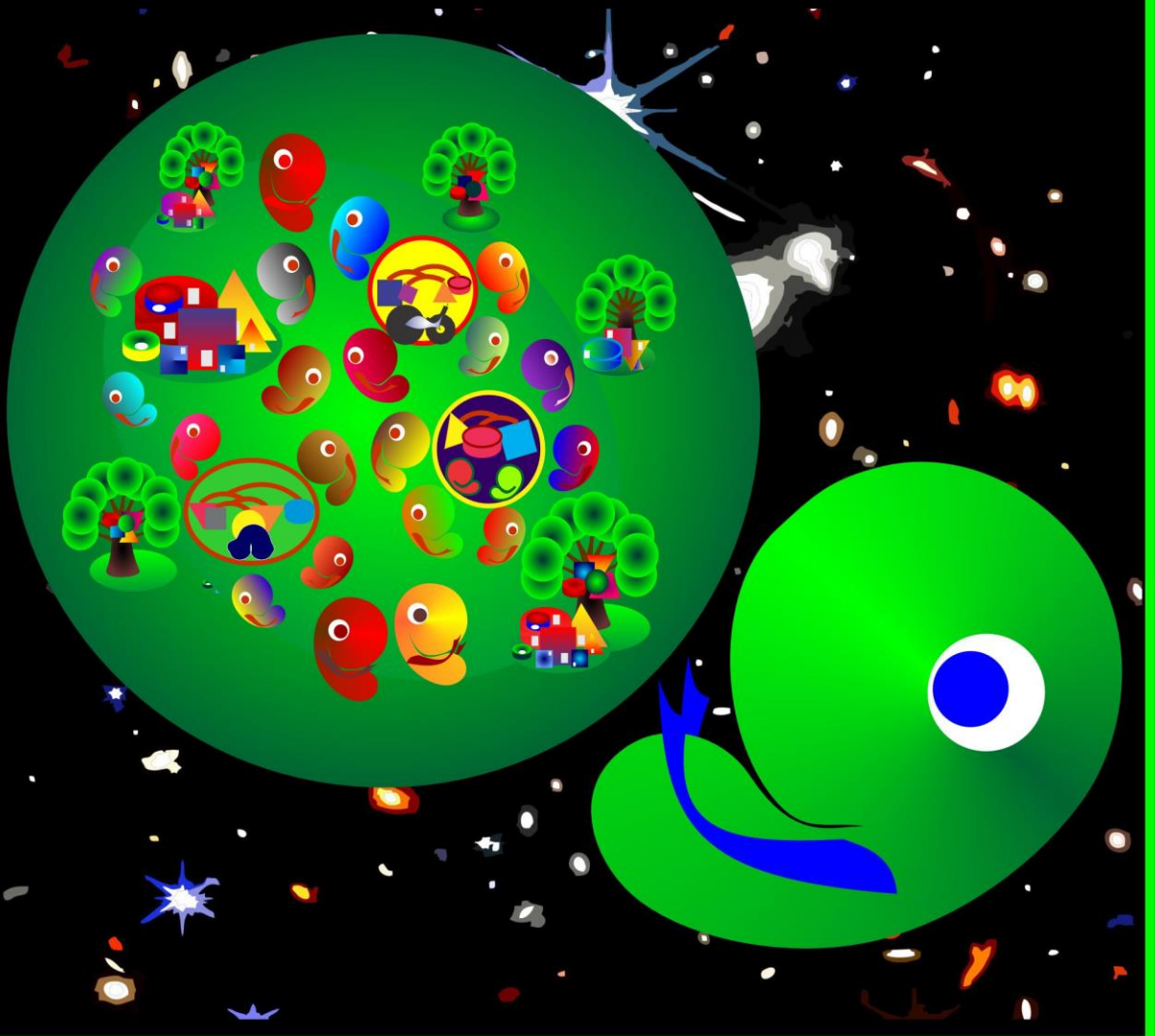


"I visited five very different worlds. One had no life on it. The other four had very different paths to their futures."

"One world was in deep, deep trouble."

"Two of the worlds, including a world named Earth, faced very bad futures but still had hope. Fortunately, with my help, they changed their futures from bad to good. They changed from being selfish to being unselfish. They are now on the path to thriving future."

"One world, like Whimsey World, was already thriving when I arrived. Like Whimsey World long ago, they had changed their future from bad future to a thriving future."



“I learned many lessons on my travels. But one lesson is clear. Whimseys must stay on our current unselfish course if we are to continue to thrive.”

“Our future is not fixed. It is up to us to make it worse or even better.”

“If and only if we remain unselfish, ours will be a thriving future for all.”



The sun is setting. Slowly the day is coming to an end. Whimseys are going to their homes to rest.

But an exception. Out of the corner of Angel's eye, Angel sees a very young colorful Whimsey who is highly active. Creating an extraordinary artful thing. Showing signs of rapidly developing abilities and interests like Angel's. Definitely thriving!

Angel thinks, "Great hope lies with the children of Whimsey World. Great hope lies with the children of every world. They can make the future a thriving future for all for every world."



